



Burnett County



4-H Bugle

July 2019

*In
This
Issue...*

Calendar	2
Food Resources	2
4-H Facts	3
4-H News	3
Arts & Communication	4
Animal Sciences	4
Jr. Leader Minutes.....	5
Summer Reading Program	5
Dairy Days	6
June Cloverbuds	8
Leader Minutes.....	9
Food & Clothing Revue.....	10
Archery.....	11
Contact Us	16

A Note from the Educator -

Beth Rank

Drum roll please...We have met, and surpassed, our 100 member goal set back in 2014. When I first started working in Burnett County in March 2014, we had 74 registered 4-H members. At Achievement Night, in November 2014, I put out the challenge that, "I love cupcakes but I love 4-H more and want to see more of both. If we get 100 enrolled 4-H members this year, I will make 100 cupcakes and we will have a party!" So, fast forward to 2019 and dat-da-da, we have 100+ members enrolled in Burnett County 4-H.

Congratulations to Kiara Johnson for being the 100th member to enroll in 4HOnline. Kiara is a member of our newest 4-H club, Branstad Bucks!

If you are wondering if we will be eating cupcakes soon, the answer is yes. I will have time to make cupcakes in August (after Summer Camp) so be sure to sign up to attend the August 18th County Trip to the Teaching/Display Gardens in Spooner at the Agriculture Research Station. RSVP by August 12th (so I know how many cupcakes to make in case we need more than 100!)



100 +

Calendar

JULY

- 1 Western Wisconsin Association of Rocketry Meeting, Grantsburg Airport, contact Craig Bowman (715-463-2684 or 715-220-6459)
- 4 Independence Day, *UW-Extension Office Closed*
- 6-14 Citizenship Washington Focus Week 6
- 8 Leaders' Association Meeting, 7pm, Gov't Center
- 9 State 4-H Plant & Soil Science Day
- 14 Jr Leaders' Meeting
- 15 Summer Camp Planning/Setup, Camp Burnett, Lake 26
- 16 Cloverbud Day Camp, Camp Burnett,
- 16-19 Summer Camp, Camp Burnett
- 20 August Bugle Submission Deadline

AUGUST

- TBA Arts Camp Registration **DEADLINE**
- 1-11 Wisconsin State Fair, West Allis
- 4 Western Wisconsin Association of Rocketry Meeting, Grantsburg Airport, contact Craig Bowman (715-463-2684 or 715-220-6459)
- 6 National Night Out, Crooked Lake Park in Siren, and Memory Lake Park, Grantsburg
- 11 Jr Leaders' Meeting
- 12 Siren Countywide Cloverbud Meeting, 6pm, Gov't Center
- 12 Leaders' Association Meeting, 7pm, Gov't Center
- 13 Grantsburg Countywide Cloverbud Meeting, 6pm, Grantsburg Library
- 18 County Trip to North Country Master Gardeners Display & Teaching Gardens, 1:30 pm, Spooner
- 20 September Bugle Submission **DEADLINE**
- 22-25 Burnett County Agricultural Society Fair, Grantsburg

SEPTEMBER

- TBA Enrollment for 2019-2020 4-H Year Begins on 4HOnline
- TBA First Day of School
- 1 Western Wisconsin Association of Rocketry Meeting, Grantsburg Airport, contact Craig Bowman (715-463-2684 or 715-220-6459)

SEPTEMBER - continued

- 2 Labor Day, *UW-Extension Office Closed*

- 8 Jr Leaders' Meeting
- 9 Siren Countywide Cloverbud Meeting, 6pm, Gov't Center
- 9 Leaders' Association Meeting, 7pm, Gov't Center
- 10 Record Books **DUE**
- 11 Grant Applications **DUE**
- 10 Grantsburg Countywide Cloverbud Meeting, 6pm, Grantsburg Library
- 11 Awards Committee Meets
- 20 October Bugle Submission **DEADLINE**
- 20-22 Central Burnett County Fair, Webster
- 30 End of 2018-2019 4-H Year

OFFICE HOURS - Tammy is in the Land Services Office Monday - Thursday from 9:00 am until 4:00 pm, Friday 9:00 until 3:30. Beth Rank is in the Extension office Monday - Friday from 8:30 am until 4:30 pm.

4-H
with **Alex & Emma**



The harder you think, the more oxygen & fuel your brain will use from your blood. Up to 50%.

FOOD RESOURCES - Second Harvest Food Distribution dates at Connections in Webster from 11am-4pm

- July 5 & 18
- August 1 & 15
- September 5 & 19

Children's books will be given to families on food distribution days also!

Free bread available at Trinity Lutheran Church in Falun every Friday from 11am until the bread is gone.

4-H News

COUNTY TRIP

WHO: Burnett County 4-H members, leaders, and immediate family

WHEN: Sunday, August 18, 2019 1:30 p.m.

WHERE: Spooner Ag Research Station Teaching & Display Garden
The Perennial Display Garden is part of the Spooner Ag Research Station demonstration garden. The demonstration garden can be found across from the Sheep Research Facility on Orchard Lane. Orchard Lane is located 1½ miles east of Spooner on Highway 70 or ½ mile west of the Hwy 70/53 interchange.

HOW: Families can transport themselves or arrange to caravan or carpool with club members if clubs choose to make arrangements.

COST: Free-will donation to give to North Country Master Gardeners organization who will be leading the tour and fun activities.

PARKING: Along Orchard Lane

DEADLINE: Register no later than **August 12th** by calling Beth at Extension Office 715-349-2151 or emailing her at beth.rank@wisc.edu

4-H Facts

In 4-H, members learn about topics that interest them. These are referred to as members' projects. That could be anything from learning how to cook, build a robot, or care for an animal. Every 4-H member decides what they want to learn and do as they explore their project.

The top 5 projects during the 2017-2018 year that youth, in grades 3-13, enrolled in were: Music, Art, Youth Leadership, Photography, and Theatre Arts.

Youth in 5K-2nd grade enroll in the Cloverbuds project. Twenty percent of membership was Cloverbuds during the 2017-2018 year. They were given a specific curriculum and offered monthly project meetings in either Siren or

Grantsburg.

According to the Award Guidelines in order for members to Achieve in 4-H, they must enroll in a minimum number of projects by grade:

Gr K-2: Cloverbuds

Gr 3-5: at least 2 projects

Gr 6-8: at least 3 projects

Gr 9-12: at least 4 projects

First year members enroll in a minimum of two projects. The Club's project and 1 other project.

4-H Shooting Sports is a national program involving 4-H youth and adult 4-H volunteers. Adult instructors are required to successfully complete a twelve-hour certification workshop before they are approved to teach youth. The educational focus is on life skills development, safety procedures and responsible use of firearms and archery equipment.

The Archery Project is an up-and-coming area of interest by adult volunteers and 4-H youth. . An Archery lesson will be taught at 4-H Summer Camp.

BUGLE DEADLINE - The **DEADLINE** to submit all *Bugle* articles, news, photos, etc. is the 20th of the month. Please drop your items off at the office or email Beth Rank. Anything received after the 20th will go in the following month's *Bugle*.

NEW EMAIL - With the transition to UW-Madison, Beth has a new email address. Please replace beth.rank@ces.uwex.edu with beth.rank@wisc.edu. The ces.uwex.edu account will be forwarded until sometime in 2020.

PLAT BOOKS - Plat book sales are one of the main fundraisers of the Burnett County 4-H program. Please encourage people to purchase a traditional paper plat book, wall map, or maps in two digital versions.

1. SmartMap for your smart phone or tablet. A SmartMap allows you to view your location on the map and track real-time movement with the device GPS, you can measure distances and areas as well as add points of interest, photos, position and label names to the map

Continued on page 4

and much more.

2. eBook for your tablet, laptop or PC. This is a digital version of the plat book.

Visit mappingsolutionsGIS.com for these digital products.

FAIR BOOKS are now available at various locations throughout the county. Please remember that in order to achieve in Burnett County 4-H you must exhibit at least one thing for each of your projects. Items can be exhibited other places beyond the fair but this is an excellent opportunity to show what you've learned this year. You also need to include each project in your Record Book in order to achieve. If you can't remember which projects you enrolled in you can login to 4HOnline or contact Beth beth.rank@wisc.edu or Tammy tjohnson@burnettcounty.org at the Extension Office and they can look it up for you. If you need help figuring out what Department, Class, and Lot to enter an item please connect with Fair volunteers or Beth Rank can also try to help.

4-H MILITARY KIDS SUMMER STEM CAMP!

Do you know any youth in your county with a family member in the military? If so, please spread the word about this year's 4-H Military Kids Camp! The camp runs from Aug 18 – 21 and is open to youth with a parent/guardian/sibling in the military, ages 9 – 13. Registration ends July 1 and the participation fee is \$60. Visit the OMK website (<https://fyi.extension.wisc.edu/wiomk/camping-programs/>) for more information and registration forms.

Communication

CREX PHOTO CLUB - meets the second Saturday of the month, 10am - noon at Crex Meadows Wildlife Area. Learn more about digital photography. Share images with fellow photographers to learn new techniques. Contact Crex Meadows Wildlife Area at 715-463-2739 or www.crexmeadows.org.

INVESTIGATE Arts & Communication projects at <http://fyi.uwex.edu/wi4hprojects/arts-communication/>.

Animal Sciences

PREMISE ID NUMBER IS REQUIRED if exhibitors are planning to bring any animals to the fair. The fairs must have numbers on file for all animal exhibits including cattle, horses, pigs, sheep, goats, llamas, alpacas and poultry. Go to www.wiid.org to apply now so you have everything ready for the warm weather we usually have in August and September.

4-H HORSE ASSOCIATION HANDBOOK

The 4-H Horse Association Handbook has now been updated for 2019! The Horse Handbook is located at <http://fyi.uwex.edu/wi4haganimalscience/wi-4-h-horse-assn-handbook/>

For more information contact Liv Sandberg, UW-Extension Horse Specialist, 608-263-4303, sandberg@ansci.wisc.edu or Linda Pribek, Executive Secretary, 4-H Horse Association, at 920-388-0588, wi4horse@wildblue.net

INVESTIGATE Animal Sciences projects at <http://fyi.uwex.edu/wi4hprojects/animal-sciences/>.

STATE 4-H PLANT SCIENCE DAY EVENT to be held Tuesday, July 9th at the *Waushara County Fairgrounds in Wautoma*. Youth in grades 3-13 can test their knowledge about plants while learning how to judge and identify a wide variety of plant specimens. For study guide information and to prepare for the contest see the **National Junior Horticultural Association** website at <http://www.njha.org/>

The contest for participants will be held in the morning, an educational workshop in the afternoon concluding with contest results.

The event begins with registration at 9:30 a.m. and ends at 2:00 p.m. Registration is \$10.00, which includes all materials, handouts, and lunch.

Walk-ins are welcome but pre-registration is preferred for lunch and material count. *Send no money now, but fill out the registration form below and mail to:*

State 4-H Plant Science Day, Polk County UW-Extension Office, 100 Polk Plaza, Suite 190, Balsam Lake, WI 54810 For additional information contact Chuck Prissel at 715-485-8600 or charles.prissel@wisc.edu

(Continued from page 4)

Younger Members

4-H JUNIOR LEADERS' MEETING MINUTES

Sunday, June 9, 2019

Meeting Leader - Jalyynn Nelson, Note taker – Mason Getts

Present: Rylie Nelson, Alex Peterson, Joel Hillman, Mason Getts, Hannah Hillman, Kylie Blakeslee, Chloe Blakeslee, Maddie Thiex, Jalyynn Nelson

Secretary's report was read by Jalyynn.

New business: Dairy Days, June 14, 2019.
Walking Taco fundraiser.

End of summer activities?

Maddie made a motion to adjourn meeting, Rylie seconded.

Meeting adjourned at 1:30

WEBSTER SUMMER READING PROGRAM

Outer Space themed program taught by Mason Getts

On Wednesday, June 19th Mason Getts shared his love of the sky and space with participants at the Webster Library Summer Reading Program. Mason led the group in making balloon rockets, straw rockets, and edible constellations. He also shared information about going to 4-H Space Camp in Huntsville, Alabama and encouraged

CLOVERBUD PROJECT DAY

Maiya Fuller, as part of her Youth Leadership project, hosted an afternoon of jungle fun on Sunday, June 23rd. The second annual Cloverbud Project Day was tons of fun. Participants enjoyed making popsicle stick snakes, playing with a parachute, and making colorful handprint birds. Maiya ended the fun afternoon by reading a fun, jungle-themed book.



youth to join 4-H so they could

H so



Above Mason teaching youth to make edible constellations

(Continued on page 6)

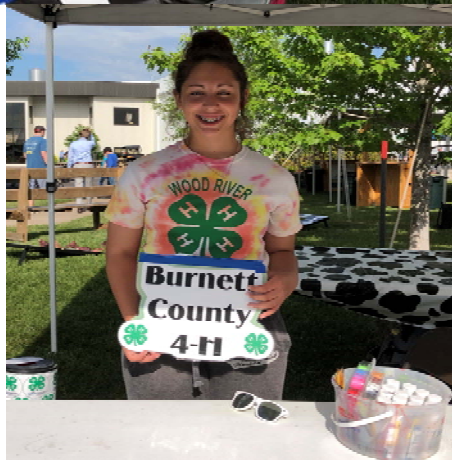
DAIRY DAYS

On Friday, June 14th we had many hands help at the Walking Taco fundraiser and face painting during Burnett Dairy Day. We raised money for educational trips, archery project, and for summer camp. Many volunteers braved the rain to get our booth set up.

Thanks to the following individuals or businesses who donated supplies and/or time to make this fundraiser successful: Don & Charlene Strabel 20 lbs. hamburger, Burnett Dairy Cooperative 5 lbs. shredded cheese, Grantsburg Family Foods 6 bags of chips, Kozy Kitchen 5 lbs. shredded lettuce, many volunteers who gave their time, energy and resources.

Without donated supplies the profit margin on this first year's attempt at a food stand would not have yielded much. Rain can be blamed for some as well as location. We will discuss improvements for next year at the July 8th 4-H Leaders meeting.

Alex Peterson & Maiya Fuller helped with face painting.



experience all

Grace Lahners
helped with face
painting

the amazing
things Mason
has during his 4-
H career.



Phil Stiemann & Amy Kopecky help sell
Walking Tacos.
Not pictured: Emma & Marge Peterson



Sheryl Stiemann, Maddie Thiex, and
Jaylynn Nelson helped sell Walking
Tacos

I love 4th H



GEAR UP FOR THE COUNTY FAIR

Madison, Wis. (July 2019) – July is county fair time for many 4-H families. And it's the perfect time to show your 4-H pride by ordering a Wisconsin 4-H license plate for the car, truck or motor home. The specialty plate, now available through the Wisconsin Department of Motor Vehicles, supports the Wisconsin 4-H program, and bears the message 4-H Empowering Youth. The sale of the plate includes a fee that goes to the Wisconsin 4-H Foundation.

"This is a great way for our 4-H families, alumni and supporters to show their fierce love of 4-H," says Brenda Scheider, Executive Director for the Wisconsin 4-H Foundation. "Half of the proceeds from every plate sale will go back to the county in which the plate was purchased. The other half will be used for state and regional 4-H programs."

Vehicles that qualify for the 4-H license plate include:

- Automobiles, motor homes (annual registration only), motor trucks
- o 4,500, 6,000 or 8,000 pounds gross weight including dual purpose farm and dual purpose motor home
- 12,000 pounds gross weight farm truck

Persons requesting 4-H Foundation license plates will pay:

- \$25 annual donation. The donation may be deductible. \$15 issuance fee or an annual;\$15 personalized plate fee, if requested.

The regular registration fee for the vehicle if the current plates expire within three months or the vehicles has no plates.

At each plate renewal, 4-H supporters will pay the \$25 donation and the regular registration fee for non-personalized 4-H license plates.

4-H license plates may be personalized by paying a \$15 personalized plate fee each year in addition to the \$25 donation and regular annual registration fee.

Contact the Wisconsin Department of Transportation or go to www.wisconsindot.gov/Documents/formdocs/mv2969.pdf for more information.

The Wisconsin 4-H Foundation exists to provide essential support for the 4-H Youth Development program – a program of the University of Wisconsin Cooperative Extension. Last year, individuals, corporations and foundations provided support for a network of Cooperative Extension staff and more than 20,000 adult and youth volunteers in shaping nearly 150,000 youth who take part in 4-H programs throughout the state.

4-H Foundation supporters provide resources to create cutting-edge, relevant programs for young people to learn real-world skills that will prepare them for the challenges of today and tomorrow, moving communities, the state, our county and the world forward in ways no other youth organization can.

The Wisconsin 4-H Foundation is dedicated to providing funding for 4-H programs that teach young people the skills necessary to become responsible, productive citizens. Hands-on 4-H activities emphasize communication skills, self-confidence, sound decision-making practices, and community concern, all of which prepare today's youth to be our leaders tomorrow. Find out more about the Wisconsin 4-H Foundation and how you can support our most precious resource, Wisconsin Youth, at www.Wis4HFoundation.org.



Cloverbuds



We use our senses every time we eat. Colors, crunches, smells, textures, and taste all matter when we choose fruits and vegetables to eat. Most people do not eat the recommended amount of fruits and vegetables. The June Cloverbud lesson was all about eating fruits and vegetables using our five senses. If someone put a slice of fruit in a bag and asked you to close your eyes and identify the fruit only by smell could you do it? What if you closed your eyes and someone bit into an apple or snapped a carrot stick, do you think you could identify the sound? Fruits and vegetables are good for our bodies and we can include them in our diet during meals and snacks. For this lesson we made "Two Healthy Snacks" posters that can be entered in the county fair. The poster contains two plates each outlining a fruit or vegetable we could eat as a snack and why it is a healthy choice.

The second of the four H's in 4-H is "health," which includes things like good sleep habits, choosing nutritious foods, getting exercise, and making other choices that support our well-being. In 4-H, youth can explore a wide range of projects where they can learn about health, including: child development; fun and fitness; foods and nutrition—from growing or raising their own food to cooking; safety; lots of different outdoor activities like hiking, canoeing, camping and more. Over time, they may become a youth leader in health-related projects they love.

Fun at the 2019 County Fairs!

Burnett County Ag Society Fair August 22-25

Pre-registration date is August 9, 2019. Forms can be mailed to: 13100 Carl Berg Road Grantsburg, WI 54840

<http://grantsburgfair.com/>

Central Burnett County Fair September, 20-22

Pre-registration date is September 17, 2019. Forms can be mailed to: PO Box 43 Webster, WI 54893 or email

cbcfair@starwire.net.

<http://www.cbcfair.org/>



4-H'ers participate in



5M
ANNUALLY
SCIENCE
PROJECTS



2.5M
ANNUALLY
HEALTHY LIVING
PROJECTS



2.5M
ANNUALLY
CITIZENSHIP
PROJECTS

Music in the Dark

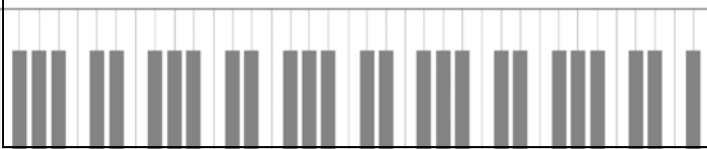
Thursday nights at Siren's Crooked Lake Park

(in case of bad weather event is moved to Siren School Auditorium)

June 7-August 23 6:30 p.m.

Orange 4-H will be serving concessions on June 6th

Wood Creek 4-H will be serving concession on
August 8



Leaders' Minutes

4-H LEADERS ASSOCIATION, JUNE 10, 2019
7:00 PM, ROOM 165

CALL TO ORDER

PLEDGES

SECRETARY'S REPORT

TREASURER'S REPORT

-Payments due in June 2019

CLUB REPORTS- BRANSTAD BUCKS, JOLLY HS, ORANGE, WOOD CREEK, WOOD RIVER BEAVERS

EXTENSION REPORT

JUNIOR LEADER REPORT

OLD BUSINESS

Food & Clothing Revue – Sunday, June 2nd 1:00-3:00 Gov't Center

Face Painting at Burnett Dairy's Dairy Day on Friday, June 14th 10-5.

-Really need help noon-2:00—no one signed up for that shift yet. All are welcome—not just Jr. Leaders. We will be promoting 4-H Camp s accepting donations for camp.

Walking Taco 4-H fundraiser at Burnett Dairy's Dairy Day on Friday, June 14th 10-5

-Still need: lettuce, tomatoes, taco sauce, sour cream, chips

Need help noon-2:00—no one signed up to help here either.

Cloverbud Day Camp – Tuesday, July 16th
Camp Burnett on Lake 26 -Registration deadline June 17th

Summer Camp – July 16th-19th Camp Burnett on Lake 26

-Chaperones needed: both genders but especially males.

-Update menu more?

-Food donations: Burnett Dairy donated string cheese for a snack. Thanks to Karin for applying for that. Beth submitted an application to Kwik Trip for 75 pieces of fruit and 16 gallons of milk. It said to allow 4-6 weeks for a decision.

-Food dehydrators—we would like to borrow 4 total to make apple chips.

-Anyone have a camper we could use for chaperones, if needed?

Herdsmanship Award at Grantsburg Fair

County Trip – North Country Master Gardener Teaching & Display Gardens in Spooner on Sunday, August 18th 1:30 p.m. We will purchase buckets of ice cream for after tour/ activity. Encourage club members to RSVP by August

ANY OTHER OLD BUSINESS

NEW BUSINESS

Grantsburg Fair

-Flower watering

-Food Stand fundraiser

Charters

-Due November 1st

-Same form as last year

-May complete financial report after fiscal year ends on June 30th

-100 member celebration.

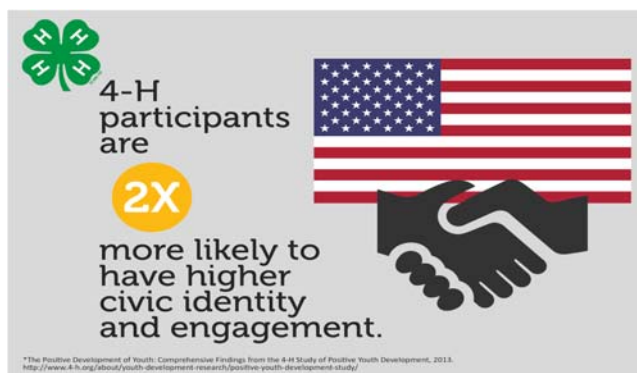
-Celebrate achieving goal.

-Need to reset goal and do a quick check of what is good and what/how we could do things better.

Humane Society is looking for volunteers on weekends to put up the outside chain fencing at their new facility. Contact Peggy (715-222-9375) or Jim Tolbert (715-222-9376) if anyone (old enough to do manual labor) can help.

ANY OTHER NEW BUSINESS

Next meeting is July 8, 2019 at 7:00 pm , Room 165.





Food & Clothing Revue

Participants

(L to R)

Allison, Alex, Elle,
Kate, Elizabeth



Food & Clothing Revue

Judging
(Janell Sacharski)



Archery

June 26th marked the first night of beginning archery class a success! Fun was had by all, even with all the safety training. We exceed our goal to enroll a class of at least 12 (half were missing tonight due to sports and camp), introduce kids to archery and 4-H. Kids were all on the targets, even some bullseyes. This was a dream of Anna Treague and Karin Reinert for over 3 years. Persistence and patience pays off!

A big thank you to Northwest Community Alliance and WI DNR for the equipment grant and equipment loan, Bryn Anderson at Siren School for facility, Grantsburg schools for 2nd half facilities and last, but not least; Steve Reinert, Alexis Slater and all the kids for helping out with set up/tear down and activities table! It definitely takes a village!



Left Group
learning about
archery

Below: Youth
shooting



**Helena
Wagner**
shooting
bow



Above: Reviewing targets

Below: Anna Teaching



**Brody
Beecroft**
with bow





Extension

UNIVERSITY OF WISCONSIN-MADISON

Burnett County Extension Office
7410 County Road K, #107
Siren, WI 54872

Burnett County 4-H Bugle



Area Extension Director
Lori Baltusis
Phone: (715) 295-4112
Email: lori.baltusis@wisc.edu

Spooner Agricultural Research Station
Phone: (800) 528-1914
Kevin Schoessow, Area Ag Agent

Burnett County
Government Center
Phone: (715) 349-2151
Fax: (715) 349-2102
Email: beth.rank@wisc.edu
Website: www.burnett.uwex.edu/4h
Beth Rank, 4-H/ Positive Youth Development Educator
Julie Yezek, Nutrition Education Program
Tammy Johnson, Support Staff

An EEO/AA employer, University of Wisconsin-Extension provides equal opportunities in employment and programming, including Title IX and ADA requirements. Persons with disabilities who require alternative means for communication of program information should contact the UW-Extension office.

Burnett County 4-H Leaders Association Executive Committee
Phil Stiemann: President, Don Strabel: Vice President,
Tessa Zeller: Secretary, Karin Reinert: Treasurer