



Burnett County



4-H Bugle

August 2019

A Note from the Educator -

Beth Rank

In This Issue...

Calendar	2
Food Resources	2
4-H Facts	2
4-H News	3
Arts & Communication	4
Animal Sciences	4
Younger Members	5
Youth Leadership	5
Jr. Leader Minutes	5
Leader Minutes	6
Summer Camp Photos	11
Project Day Session Proposal ..	14
Project Grant Application ...	15
Contact Us	16

With county fairs just around the corner I thought it'd be timely to talk about exhibiting projects. 4-H members have been exhibiting projects since the corn and tomato projects at the turn of the 20th century. Preparing and selecting an exhibit reinforces life skills such as decision making, learning to learn, critical thinking, problem solving, self-motivation, self-responsibility, keeping records, and goal setting, to name a few.

There are four steps in exhibiting

1. Focus on goals you set while completing the project
2. Decide how best to display what you learned
3. Record your thoughts, expenses, and results in your Record Book
4. Explain your exhibit to the judge or evaluator (if available)

So, as you are preparing exhibits for the county fair someone may ask what an exhibit is. Well, a 4-H exhibit is an item to be publicly displayed that illustrates a goal you reached or skill you mastered while completing a 4-H project. 4-H exhibits can be displayed at a county fair, school, business or restaurant, library, or show such as a livestock show.

There are different types of exhibits. This may be mind-blowing for some, but there are other types of exhibits beyond posters! There are word-based exhibits (reports, stories, records, diaries, etc.), picture-based exhibits (maps, photographs, scrapbooks, etc.), and collections (samples or specimens of similar items that are clearly labeled). There are also everyone's favorite...posters! (which are a combination

Continued on page 3



Calendar

AUGUST

- 1-11 Wisconsin State Fair, West Allis
- 4 Western Wisconsin Association of Rocketry Meeting, Grantsburg Airport, contact Craig Bowman (715-463-2684 or 715-220-6459)
- 6 National Night Out, Crooked Lake Park in Siren, and Memory Lake Park, Grantsburg
- 11 Jr Leaders' End of Year Celebration, Crooked Lake Park 1:00—4:00
- 12 Siren Countywide Cloverbud Meeting, 6pm, Gov't Center
- 12 Leaders' Association Meeting, 7pm, Gov't Center
- 12 Deadline to register for County Trip
- 13 Grantsburg Countywide Cloverbud Meeting, 6pm, Grantsburg Library
- 18 County Trip to North Country Master Gardeners Display & Teaching Gardens, 1:30 pm, Spooner
- 20 September Bugle Submission **DEADLINE**
- 20 Arts Camp Registration in 4-HOnline **DEADLINE**
- 22-25 Burnett County Agricultural Society Fair, Grantsburg

SEPTEMBER

- TBA Enrollment for 2019-2020 4-H Year Begins on 4HOnline
- 1 Western Wisconsin Association of Rocketry Meeting, Grantsburg Airport, contact Craig Bowman (715-463-2684 or 715-220-6459)
- 2 Labor Day, *UW-Extension Office Closed*
- 8 Jr Leaders' Meeting
- 9 Siren Countywide Cloverbud Meeting, 6pm, Gov't Center
- 9 Leaders' Association Meeting, 7pm, Gov't Center
- 10 Record Books **DUE**
- 11 Project/Art Camp Grant Applications **DUE (SEE PAGE 15)**
- 10 Grantsburg Countywide Cloverbud Meeting, 6pm, Grantsburg Library
- 11 Awards Committee Meets
- 20 October Bugle Submission **DEADLINE**
- 20-22 Central Burnett County Fair, Webster
- 30 End of 2018-2019 4-H Year


OCTOBER

- TBA Arts Camp, Upham Woods
- TBA Honey Bee Poster Contest
- TBA Trip Award Applications **DUE**
- 1 Start of 2019-2020 4-H Year
- 5 Install Window Displays
- 5-6 Arts Camp, Upham Woods
- 6 Fall Project Day
- 6-12 National 4-H Week
- 12 Remove Window Displays
- 12 *(Tentative)* Fall Project Day
- 13 Jr Leaders' Meeting
- 14 Siren Countywide Cloverbud Meeting, 6pm, Gov't Center
- 14 Leaders' Association Meeting, 7pm, Gov't Center
- 15 Grantsburg Countywide Cloverbud Meeting, 6pm, Grantsburg Library
- 20 November Bugle Submission **DEADLINE**

OFFICE HOURS - Tammy is in the Land Services Office Monday - Thursday from 9:00 am until 4:00 pm, Friday 9:00 until 3:30. Beth Rank is in the Extension office Monday - Friday from 8:30 am until 4:30 pm.

4-H FACTS

with **Alex & Emma**



The brain itself can't feel pain. Even though the brain contains layers of coverings & blood vessels that contain pain receptors, the brain itself has zero.

FOOD RESOURCES - Second Harvest Food Distribution dates at Connections in Webster from 11am-4pm

- August 1 & 15
- September 5 & 19
- October 3 & 17

Children's books will be given to families on food distribution days also!

Free bread available at Trinity Lutheran Church in Falun every Friday from 11am until the bread is gone.

Continued from page 1

of words and pictures), there are also construction projects (dioramas, models, mockups, etc.), my favorite exhibits are the food projects and finally there are action demonstrations (which includes any animal exhibits or the demonstrations that were done at the 4-H Cultural Arts Festival many months ago).

Regardless of what kind of exhibits you will be entering at the upcoming county fairs, please keep in mind that proper etiquette, manners, and sportsmanship speak volumes about you and observations/impressions can last a lifetime... make them positive and encouraging for others to see.

Adapted from: Learning Through Exhibiting by Barbara Abo, University of Idaho Extension Educator, Ada County, published in August 2006.

4-H News

COUNTY TRIP

WHO: Burnett County 4-H members, leaders, and immediate family

WHEN: Sunday, August 18, 2019 1:30 p.m.

WHERE: Spooner Ag Research Station Teaching & Display Garden
The Perennial Display Garden is part of the Spooner Ag Research Station demonstration garden. The demonstration garden can be found across from the Sheep Research Facility on Orchard Lane. Orchard Lane is located 1½ miles east of Spooner on Highway 70 or ½ mile west of the Hwy 70/53 interchange.

HOW: Families can transport themselves or arrange to caravan or carpool with club members.

COST: Free-will donation to give to North Country Master Gardeners organization who will be leading the tour and fun activities.

PARKING: Along Orchard Lane

DEADLINE: Register no later than **August 12th** by calling Beth at Extension Office 715-349-2151 or emailing her at beth.rank@wisc.edu or on Facebook.

4-H Facts

In 4-H, members learn about topics that interest them. These are referred to as members' projects. That could be anything from learning how to cook, build a robot, or care for an animal. Every 4-H member decides what they want to learn and do as they explore their project.

The top 5 projects during the 2017-2018 year that youth, in grades 3-13, enrolled in were: Music, Art, Youth Leadership, Photography, and Theatre Arts.

Youth in 5K-2nd grade enroll in the Cloverbuds project. Twenty percent of membership was Cloverbuds during the 2017-2018 year. They were given a specific curriculum and offered monthly project meetings in either Siren or Grantsburg.

According to the Award Guidelines in order for members to Achieve in 4-H, they must enroll in a minimum number of projects by grade:

Gr K-2: Cloverbuds

Gr 3-5: at least 2 projects

Gr 6-8: at least 3 projects

Gr 9-12: at least 4 projects

First year members enroll in a minimum of two projects. The Club's project and 1 other project.

4-H Shooting Sports is a national program involving 4-H youth and adult 4-H volunteers. Adult instructors are required to successfully complete a twelve-hour certification workshop before they are approved to teach youth. The educational focus is on life skills development, safety procedures and responsible use of firearms and archery equipment.

BUGLE DEADLINE - The **DEADLINE** to submit all *Bugle* articles, news, photos, etc. is the 20th of the month. Please drop your items off at the office or email Beth Rank. Anything received after the 20th will go in the following month's *Bugle*.

NEW EMAIL - With the transition to UW-Madison, Beth has a new email address. Please replace beth.rank@ces.uwex.edu with beth.rank@wisc.edu. The ces.uwex.edu account will be forwarded until sometime in 2020.

Continued on page 4

PLAT BOOKS - Plat book sales are one of the main fundraisers of the Burnett County 4-H program. Please encourage people to purchase a traditional paper plat book, wall map, or maps in two digital versions.

1. SmartMap for your smart phone or tablet. A SmartMap allows you to view your location on the map and track real-time movement with the device GPS, you can measure distances and areas as well as add points of interest, photos, position and label names to the map and much more.
2. eBook for your tablet, laptop or PC. This is a digital version of the plat book. Visit mappingsolutionsGIS.com for these digital products.

FAIR BOOKS are now available at various locations throughout the county. Please remember that in order to achieve in Burnett County 4-H you must exhibit at least one thing for each of your projects. Items can be exhibited other places beyond the fair but this is an excellent opportunity to show what you've learned this year. You also need to include each project in your Record Book in order to achieve. If you can't remember which projects you enrolled in you can login to 4HOnline or contact Beth beth.rank@wisc.edu or Tammy tjohnson@burnettcounty.org at the Extension Office and they can look it up for you. If you need help figuring out what Department, Class, and Lot to enter an item please connect with Fair volunteers or Beth Rank can also try to help. Host an AFS international high school exchange student!

Community News

AFS is looking for host families for students who are coming to our area this fall. Host families provide a bed, food, & loving support. Students come with their own health insurance and spending money. Families of all types; married, single, young children or no children can host. Families have the option to host for an academic year, a semester or just 12 weeks. Will you be that person, that family who makes a world of difference in the life of a young person? To learn more please contact Lisa Boynton at: lboynton@afsusa.org or 651-356-1848(call or text) or www.afsusa.org/host-family

Communication

CREX PHOTO CLUB - meets the second Saturday of the month, 10am - noon at Crex Meadows Wildlife Area. Learn more about digital photography. Share images with fellow photographers to learn new techniques. Contact Crex Meadows Wildlife Area at 715-463-2739 or www.crexmeadows.org.

INVESTIGATE Arts & Communication projects at <http://fyi.uwex.edu/wi4hprojects/arts-communication/>.

Animal Sciences

PREMISE ID NUMBER IS REQUIRED if exhibitors are planning to bring any animals to the fair. The fairs must have numbers on file for all animal exhibits including cattle, horses, pigs, sheep, goats, llamas, alpacas and poultry. Go to www.wiid.org to apply now so you have everything ready for the warm weather we usually have in August and September.

4-H HORSE ASSOCIATION HANDBOOK

The 4-H Horse Association Handbook has now been updated for 2019! The Horse Handbook is located at <http://fyi.uwex.edu/wi4haganimalscience/wi-4-h-horse-assn-handbook/>

For more information contact Liv Sandberg, UW-Extension Horse Specialist, 608-263-4303, sandberg@ansci.wisc.edu or Linda Pribek, Executive Secretary, 4-H Horse Association, at 920-388-0588, wi4horse@wildblue.net

INVESTIGATE Animal Sciences projects at <http://fyi.uwex.edu/wi4hprojects/animal-sciences/>.

4-H Horse Champ Show, Pleasure and Fun Speed Show

Saturday, August 31, 2019 at 8:00 am. La Crosse County Interstate Fairgrounds, West Salem, Wisconsin.

The La Crosse County 4-H Horse Project is proud to sponsor and welcome you to the 4-H Champ Show! This show is open state-wide to 4-H horse project members who have received a 1st or a 2nd in qualifying classes at their county

fair. The purpose of the 4-H Champ Show is to provide opportunities for horse project members to grow in their project. The goals of this show are to provide a positive atmosphere of learning and camaraderie; build members' self-confidence; allow members to demonstrate their skills; while focusing on the safety and good sportsmanship. NOTE: ENTRIES MUST BE POST MARKED WITHIN 7 DAYS OF THE QUAILING SHOW. If your fair is after the deadline date, please give us a call. We want you to join us. Contact Information: La Crosse County UW Extension Office: 608-785-9593 email: lacrossecounty4h@lacrossecounty.org. 4-H Champ Show by phone: 608-487-1871. 4-H Champ Show by emails: Jessicamahren@gmail.com. Registration information is available on the website at: <https://burnett.extension.wisc.edu/>

45th Annual Wester District 4-h Gymkhana Horse Show.

August 17, 2019, start time 8:00 a.m. Pierce County Fairgrounds—Ellsworth WI. Registration information is on the Burnett County UW Website: <https://burnett.extension.wisc.edu/>

Younger Members

2019-2020 Cloverbud Project Activity/Record Book Planning.

The Cloverbud Project is open to youth enrolled in five-year old kindergarten through 2nd grade. Burnett County 4-H provides monthly project meetings in Siren and Grantsburg. These meetings are specially designed to be age-appropriate, encourage exploration of a variety of 4-H project areas, and teach young people to complete records throughout the year. The monthly meetings are also regularly taught by youth enrolled in the Youth Leadership Project which gives the leaders experience working with our youngest 4-Hers.

Everyone is invited to contribute to the Burnett County 4-H Cloverbud Project Meetings. The meetings are open to all 4-H parents (who can become 4-H volunteers!), 4-H volunteers, 4-H youth leaders, and community members (who

can become 4-H volunteers!).

If you're interested in teaching a lesson during the 2019-2020 4-H year, please contact Beth Rank, **by September 2nd**. The book needs to be published by October 1st. Your help is appreciated. Her phone number is 715-349-2151 and her email address is beth.rank@wisc.edu.

Youth Leadership

Burnett county 4-H Jr. Leaders are scheduled to work in the Grantsburg Fair Food Stand on Sunday, August 25th from 11:00—4:00 p.m. Please let Beth Rank or Maiya Fuller, Summer Intern know if you can help.

Jr. Leaders' Meeting Minutes

Sunday, July 14, 2019

Meeting leader: Jordan Webster, Note taker: Alexis Slater

Present: Rylee Nelson, Mayia Fuller, Emma Peterson, Alex Peterson, Jordan Webster, Haylee Glover, Kylie Blakeslee, Chloe Blakeslee, Mason Getts.

New Idea: Make Dairy Day face painting booth self-serve? No.

Do walking taco stand again? Conclusive yes from group. It made money!

End of year celebration—Lake and Picnic idea. Date (tentative) August 11th 1:00—4:00 pm. Rain plan—Government Center. Picnic then event ends and kids can go on their own in park. (no lifeguard).

New Business

Grantsburg Fair food stand—Beth will contact Connie to reserve the Sunday date. Rylee, Maiya, Jalynn?, Alexis, Jordan, Nicholas.

National Night Out—who can help?

Mason made the motion to adjourn the meeting,

Leaders' Minutes

Present: Don Strabel, Beth Rank, Phil Stiemann, Sheryl Stiemann, Adrienne Fuller, Grace Glover, Marge Peterson

Call to order at 7:06 pm

Pledges

Secretary's report---reviewed. Motion by Phil and Adrienne to accept as written.

Treasurer's report---reviewed via phone with Karin. Motion by Phil and Marge to accept as written. Motion by Phil, second by Marge to absorb funds for Happy Steamers club back into the general fund. Passed. Also discussed money payments being made on time for trips.

Club reports:

Branstad Bucks---none

Jolly Hs--3 members completed tractor safety, completed highway cleanup, meeting this week to do tie-dyeing, excited for camp.

Orange--participated in 4th of July parade in the rain, setting up a painting project and record book meeting, getting ready for the fair.

Wood Creek--getting ready for camp and selling food at the Rock and Mineral Show, participated in 4th of July parade in Siren, worked at Dairy Days, next meeting is 7/21 with a club tour.

Wood River Beavers---none

Extension--Maiya started work as summer intern and as assistant camp director, Beth is in camp mode, Parent Cafe did not work out at Maple Plain.

Junior Leaders--meeting on Sunday, July 14th.

Old Business:

*Face Painting at Dairy Days went well and brought in over \$70 in donations.

*Walking Taco fundraiser brought in money, mainly due to many donations. Rain and stand location may have been factors in sales.

*Cloverbud Day Camp is July 16th

*Summer Camp is July 16-19th

--finalized menu

--34 campers attending

--Abby Hayman lifeguarding

--received a \$2000 grant from Webb Lake Community Club to use for camp expenses.

*County Trip--North Country Master Gardener Teaching and Display Gardens in Spooner on August 18th at 1:30 pm.

--tours/activities

--ice cream

--cupcakes to celebrate 100 member goal

--encourage members to RSVP by August 12th

*Grantsburg Fair

--flower watering continues

--clubs should contact Connie directly for a time to work in the food stand.

*Archery--3rd meeting is this week, 14 kids signed up and most things are going well.

New Business

*Updates to trip award packet---1st review---more at later meetings.

*Project Day--October 5th (likely)---check with club members to see what they are interested in learning about.

*School Open Houses--discussed having Maiya make a display board and making straw rockets as an activity at open houses. Clubs will check with older members who may be able to help.

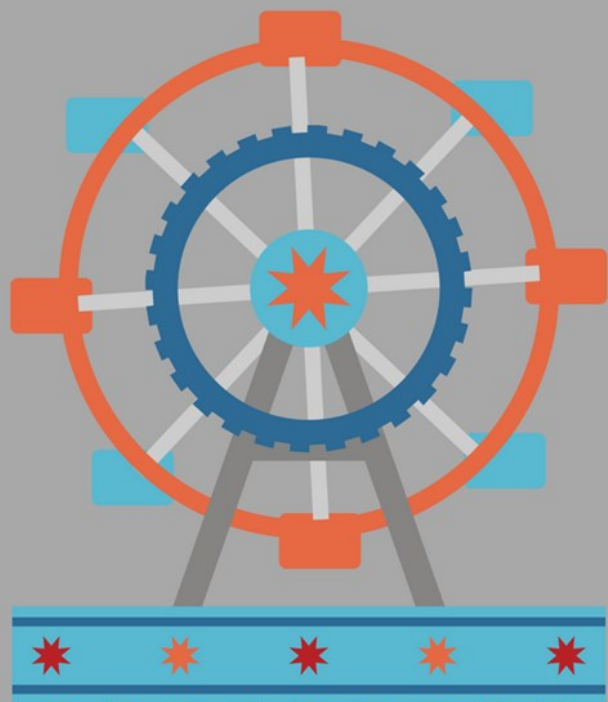
*National Night Out--August 6th---likely do straw rockets again.

Meeting adjourned at 8:25 pm

Next meeting is August 12th at 7 pm, Room 165
---Please consider coming!!



Support Wisconsin 4-H Youth



GO BACK TO SCHOOL WITH NEW 4-H PLATES

Madison, Wis. (August 2019) – It's back to school time for kids across the state. And it's the perfect time to show your 4-H pride by ordering a Wisconsin 4-H license plate for the car, truck or motor home. The specialty plate, now available through the Wisconsin Department of Motor Vehicles, supports the Wisconsin 4-H program, and bears the message 4-H Empowering Youth. The sale of the plate includes a fee that goes to the Wisconsin 4-H Foundation.

"This is a great way for our 4-H families, alumni and supporters to show their fierce love of 4-H," says Brenda Scheider, Executive Director for the Wisconsin 4-H Foundation. "Half of the proceeds from every plate sale will go back to the county in which the plate was purchased. The other half will be used for state and regional 4-H programs."

Vehicles that qualify for the 4-H license plate include:

- Automobiles, motor homes (annual registration only), motor trucks
- o 4,500, 6,000 or 8,000 pounds gross weight including dual purpose farm and dual purpose motor home
- 12,000 pounds gross weight farm truck

Persons requesting 4-H Foundation license plates will pay:

- \$25 annual donation. The donation may be deductible. \$15 issuance fee or an annual \$15 personalized plate fee, if requested.

The regular registration fee for the vehicle if the current plates expire within three months or the vehicle has no plates.

At each plate renewal, 4-H supporters will pay the \$25 donation and the regular registration fee for non-personalized 4-H license plates.

4-H license plates may be personalized by paying a \$15 personalized plate fee each year in addition to the \$25 donation and regular annual registration fee.

Contact the Wisconsin Department of Transportation or go to www.wisconsindot.gov/Documents/formdocs/mv2969.pdf for more information.

The Wisconsin 4-H Foundation exists to provide essential support for the 4-H Youth Development program – a program of the University of Wisconsin Cooperative Extension. Last year, individuals, corporations and foundations provided support for a network of Cooperative Extension staff and more than 20,000 adult and youth volunteers in shaping nearly 150,000 youth who take part in 4-H programs throughout the state.

4-H Foundation supporters provide resources to create cutting-edge, relevant programs for young people to learn real-world skills that will prepare them for the challenges of today and tomorrow, moving communities, the state, our county and the world forward in ways no other youth organization can.

The Wisconsin 4-H Foundation is dedicated to providing funding for 4-H programs that teach young people the skills necessary to become responsible, productive citizens. Hands-on 4-H activities emphasize communication skills, self-confidence, sound decision-making practices, and community concern, all of which prepare today's youth to be our leaders tomorrow. Find out more about the Wisconsin 4-H Foundation and how you can support our most precious resource, Wisconsin Youth, at www.Wis4HFoundation.org.

4-H Arts Camp 2019: Be a Camper or Adult Chaperone



Who: Youth in grades 6-8

When: October 5-6, 2019

Where: Upham Woods Outdoor Learning Center, Wisconsin Dells

Youth Register in 4HOnline by August 21, 2019.

A statewide Arts & Communication workshop designed for middle school age youth in grades 6-8.

Camp is October 5 at 9:00 am-October 6 at 2:30 pm at Upham Woods Outdoor Learning Center, Wisconsin Dells.

Youth will rotate through the different Arts tracks each day, participate in a group Arts experience Saturday evening, and close with a ceremony for parents and families, celebrating the results of your group Arts Camp experiences. You'll also meet new friends, participate in camp games, and enjoy the great natural setting of Upham Woods, a 300-acre environmental education center on the Wisconsin River near Wisconsin Dells.

4-H Arts Camp is sponsored by the University of Wisconsin-Extension and is funded through registrations and a grant from the Wisconsin 4-H Foundation. The program is planned and led by a talented group of 4-H high school youth, assisted by UW-Extension specialists, 4-H staff and key adult volunteers. You'll learn lots of creative ideas to take home to share with your family and friends.

If you would like to be an adult or youth counselor, apply in 4HOnline by July 15, 2019. Applicants will be notified of staff selection by August 1, 2019.

For more information on 4-H Arts Camp: <https://fyi.extension.wisc.edu/wi4harts/arts-camp/>



(above): Maddie & Jalynn to CWF with some of WI delegation.

(below): Maddie & Jalynn board the bus to Citizenship Washington Focus.



2019 Cedar Crest Ice Cream 4-H Flavor Contest

Cedar Crest Ice Cream and the Wisconsin 4-H Foundation have teamed up again to present the "Cedar Crest Ice Cream 4-H Flavor Contest" for Wisconsin 4-H clubs. The contest is open to all Wisconsin 4-H members to create and submit a flavor recipe. Entries are due no later than October 1, 2019. Selected will be five top finalists with one finalist chosen as the grand prize winner. For all contest rules and information, <https://www.cedarcresticecream.com/about-us/2019-cedar-crest-ice-cream-4-h-flavor-contest/2019-4-h-contest-form/>

14th Annual Kids & Cows Family Day



Saturday October 12, 2019
at Barron County Fairgrounds
Rice Lake, WI

Registration.....	8:00-9:00
Educational Workshops & Guest Speaker.....	9:00-12:00
Lunch—Food Stand, AG Olympics & Fitting Contest.....	Noon-1:00
Showmanship Competition.....	1:00-3:30
Breed Show & Supreme Champion.....	3:30

*Activities for all ages

www.wisconsinbeefproducers.com

Contact Lori Lyons 715-210-0049 or lalyons4@yahoo.com

*Kids are encouraged to bring their own cattle—kids and adults without will have one provided

The Wood Creek 4-H club held their monthly meeting July 21 at Crooked Lake Park. We discussed the county trip and working at the Grantsburg food stand. We also signed up for the Rock and Mineral Show food stand. We discussed how 4-H camp went and what the kids liked about it. We had demonstrations by Jordan and Nick Webster, Emma Swanson, and Lucas Swanson. We had our Club Tour where members showed a project they plan to take to the fair. We also made cat toys for the Humane Society using old socks and polyfil. Submitted by: Nicholas Webster and Libby Swanson



(left) Wood Creek 4-H Club share projects they plan to take to the fair during the July 21st Club Tour.

(below) Wood Creek made cat toys to donate to the Humane Society.

(right) Emma Swanson demonstrates how to make hummingbird water.



(left) Lucas Swanson demonstrates a magic trick.



(right) Nick & Jordan Webster demonstrate how to score a baseball game.



Cloverbud Day Camp 2019



Edible
Constellations



(above) Games

(below) Oreo Moon Phase



Thanks to Pearl, Michigan 4-H

30 minutes | Grades: Pre-K, 3-5, 6-8, 9-12

Take a "Penny Walk"

Description
Get outside and take a "penny walk" to see everything that is springing to life!
"Penny walks" help kids explore new surroundings and get physical exercise at the same time.

Supplies

- Penny
- Paper and pen for scavenger hunt list

Activity Steps

1. Step outside and walk until you reach an intersection in your path.
2. Flip your penny. If it lands on heads, then turn right and continue walking. If it lands on tails, turn left.
3. To make the penny walk more challenging, create a scavenger hunt list with objects you might find outside. Look for these items while you're on your penny walk!

INSPIRE KIDS TO DO

2019 Summer Camp





YOUTH STAFF



**Tom Boisvert
AIS Coordinator**



**Craig Bowman
Water Rocket Launch**



(left) Dehydrating Foods—Kale Chips

(center) Constellation Dot Paintings



Rocket Building



Chaperones



**Paul Cook and
the Water Game**



Archery



(Above) Meals... thanks to all 4-H clubs, everyone ate well.



4-H Project Day Session Planning

2019 Project Day will be Saturday, October 5, 2019 1:00-4:30 p.m. @ Siren School
Adult volunteers and youth: Submit a proposal by **August 13th** to teach at this event.

4-H Project Area: _____ Title of session: _____

Name(s): _____

Phone number: _____ Email: _____

Number of times you are willing to teach session _____ Once _____ Twice _____ Three Times (All)

Are you interested in being a participant at Project Days in addition to presenting? _____ Yes _____ No _____ Maybe
(If more than one presenter is completing this form, please write name before your response)

Brief description of session to be included in Project Day packet:

Please email Beth Rank (beth.rank@wisc.edu) a picture or clipart image to accompany your session description.

What will participants learn?

How will you teach them? (Demonstration, hands-on activity, games, etc.)

What age is recommended for your session?

_____ Any Age _____ Cloverbuds (K-2) _____ Elementary (Gr. 3-5) _____ Intermediate (Gr. 6-8) _____ Senior (Gr. 9-12)

Maximum number of participants: _____ Minimum number of participants: _____

Does your session include many expensive supplies and should have a separate session fee (example: \$2 or \$5 or \$10 supply fee) because a nice produce results from participation in the class. _____ Yes _____ No _____ Maybe

Before purchasing supplies for your session, please check with Beth to inquire about current supplies available. You will receive a final participant count for your session prior to the event.

Equipment/Supplies **participants** should bring: (white t-shirt, yarn, etc.)

Equipment/Supplies **you** will provide:

Equipment/Supplies you need: (sewing machines, kitchen area, paint brushes, sewing machines, clothes iron, laptop, projector, etc.)

Form due to Burnett County UW-Extension Office no later than August 14



Burnett County 4-H Project/Art Camp Grant Application Form 2019-2020

Nancy Carlson Memorial Grant <input type="checkbox"/> (9 and 10 years old)	Claire Erickson Memorial Grant <input type="checkbox"/> (horse or horseless)	Bessie Peterson Memorial Grant <input type="checkbox"/> (11 to 14 years old)	Maxine Stone Memorial Grant <input type="checkbox"/> (gardening/agriculture)
Art Beat! Camp Grant <input type="checkbox"/> (Grades 3-5)	Arts Camp Camp Grant <input type="checkbox"/> (Grades 6-8)	<ol style="list-style-type: none"> 1. You may apply for more than one grant. If applying for more than one, submit a form for each. 2. You may receive each grant only once in your 4-H career. 	

Name: _____ Birthdate: _____

Your Club: _____ Grade: _____

Have you achieved in your project work the last two years? ☐ Yes ☐ No

(Above question applies to applicants of the Bessie Peterson Grant.)

Explain what you will do with the grant money and your project results.

Why did you choose this project?

Your Parent's (or Guardian's) Signature: _____

Your Signature

Date

**Application DEADLINE is September 11, 2019 and can be mailed to:
UW-Madison Division of Extension, Burnett County, 7410 County Rd. K #107, Siren, WI 54872.**



Extension

UNIVERSITY OF WISCONSIN-MADISON
Burnett County Extension Office
7410 County Road K, #107
Siren, WI 54872

Burnett County 4-H Bugle



Area Extension Director
Lori Baltusis
Phone: (715) 295-4112
Email: lori.baltusis@wisc.edu

Spooner Agricultural Research Station
Phone: (800) 528-1914
Kevin Schoessow, Area Ag Agent

Website: www.burnett.uwex.edu/4h

Email: beth.rank@wisc.edu

Fax: (715) 349-2102

Phone: (715) 349-2151

Government Center

Burnett County

Beth Rank, 4-H/ Positive Youth Development Educator
Julie Yezek, Nutrition Education Program
Tammy Johnson, Support Staff

An EEO/AA employer, University of Wisconsin-Extension provides equal opportunities in employment and programming, including Title IX and ADA requirements. Persons with disabilities who require alternative means for communication of program information should contact the UW-Extension office.

Burnett County 4-H Leaders Association Executive Committee
Phil Stiemann: President, Don Strabel: Vice President,
Tessa Zeller: Secretary, Karin Reinert: Treasurer