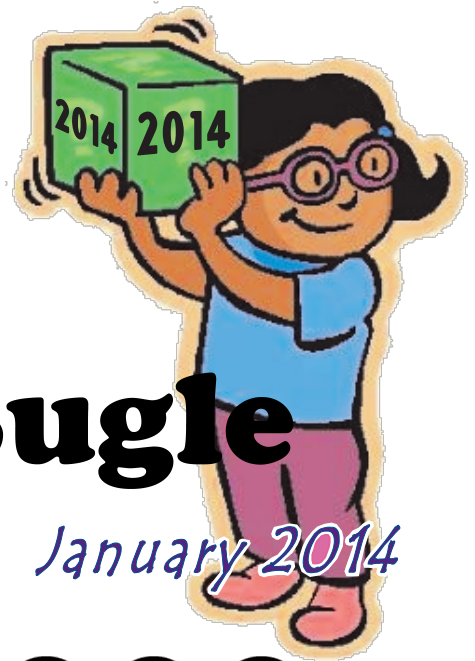


Burnett County

4-H Bugle

January 2014



**CONNECTING YOUTH & ADULTS
TO BUILD COMMUNITY SOLUTIONS**




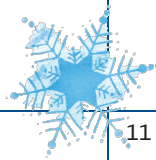
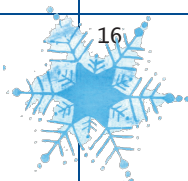


In This Issue...

Calendar	2
4-H News	3
Animal Science	8
Arts & Communication	9
Mechanical Sciences	10
Natural Resources	11
Youth Leadership	12
Club News	13
Leaders' Pages	15





4-H is a **community** of **young people** across America who are learning **Leadership**, **Citizenship**, and **Life Skills**.

JANUARY 2014

SUN	MON	TUE	WED	THU	FRI	SAT
			1 New Year's Day UWEX Office Closed	2	3	4
5	6 DEADLINE to register for 4-H Art Lab	7	8	9	10 	11
12	13 County Cloverbud Meeting, 5:30pm-6:30pm, Gov't Center Leaders' & Jr Leaders' Meetings, 7pm. Gov't Center	14	15	16 	← Winter Camp Page 3 →	
19	20 Martin Luther King Jr. Day	21 	22	23	24	25 Music Contest, 6pm, Siren School 
26	27	28	29	30	31	← 4-H Art Lab, Camp Upham Woods →

February 2014

Sun	Mon	Tue	Wed	Thu	Fri	Sat
						1 
2	3	4	5	6	7	8
9	10 County Cloverbud Meeting, 5:30pm-6:30pm, Gov't Center Leaders' & Jr Leaders' Meetings, 7pm. Gov't Center	11	12	13	14 	15
16	17	18	19	20	21	22
23	24	25	26	27 Lego Project Meeting, 4:45pm, Gov't Center	28 Project Grant Applications Due to UWEX Office.	



4-H News

DATES TO REMEMBER

January

- 6 - **DEADLINE** to register for 4-H Art Lab (page 4)
- 17 - **DEADLINE** to register for the 4-H Music Contest
- 17-18 - Winter Camp (*this page*)
- 26 - 4-H Music Contest, 6pm, Siren School Auditorium

February

- 10 - Centennial Cow order **DEADLINE**.
- 14 - Happy Valentine's Day!
- 28 - Project Grant Application **DEADLINE**.

2014 MUSIC CONTEST

REGISTRATION

The 2014 4-H Music Contest will be held on Saturday, January 25th, starting at 6pm in the Siren School Auditorium. Contest rules may be found at:

<http://burnett.uwex.edu/files/2013/03/Burnett-County-Music-Contest-Rules-and-Guidelines.pdf> .

To register, contact the 4-H office **NO LATER THAN JANUARY 17** at Beth at 715-349-2151, ext. 5, with the following information:

- Your name
- Club name
- Grade
- Category
- Division
- Selection title
- Technical requirements

RULES AND GUIDELINES

- Each 4-H member may perform in two events in the contest in addition to a large ensemble event. *All clubs are encouraged to bring a*

large ensemble, as it builds club cohesiveness.

- Solos and small ensembles are limited to three minutes. Advanced piano performers are allotted five minutes. Club ensembles are limited to 10 minutes. Points will be deducted if contestant goes over the time limit.
- Each entry will consist of one musical selection.
- Each instrumental and piano performer must provide the judge a copy of the music they are performing.
- Voice over tapes or CDs are allowed but strongly discouraged. Please try to use an accompanist or background music tape or CD. If the singer must use a voice over recording, the singer will need to use a microphone to have his/her voice heard over that of the recorded performer.
- Monetary awards will be given to 1-4th places
- In all divisions, appearance and stage presence will count as part of your score.

(Continued on page 4)





4-H News

2014 MUSIC CONTEST

(Continued from page 3)

Remember to dress so that you look your best!

CATEGORIES

- Category I - Solo
- Category II - Small Ensembles
- Category III - Large Ensemble (Group of 6 or more)

DIVISIONS

- A. INSTRUMENTAL PERFORMANCE: Judged on tone, articulation, rhythm, accuracy, musical value of the piece, and style/musicality.
- B. PIANO PERFORMANCE: Judged on rhythm, accuracy, phrasing, degree of difficulty and style/musicality.
- C. For pianists who are 6th grade and older, there are three subdivisions; Beginner, Intermediate and Advanced. An Advanced performer should be playing at level six or above in piano literature. Ask your piano teacher if you are not certain of your level.
- D. VOCAL PERFORMANCE: Judged on tone, intonation, diction, expression, style, musicality and appropriateness.
- E. VOCAL PLUS PERFORMANCE: Judging includes movement, choreography, costumes, props, originality and creativity in addition to areas judged in vocal performance.

AGE CLASSES

- Cloverbuds - Grades K-2
- Junior - Grades 3-5
- Intermediate - Grades 6-8
- Senior - Grades 9 and up

For example: if your kindergartener wants to sing a song with a friend, you would register her in Category II (Small Ensemble), Division D (Vocal Performance), Age Class Cloverbud (Grades K-2).

AWARD PREMIUMS

Category I, All Divisions		Categories II and III, All Divisions	
1st	\$4	1st	\$10
2nd	\$3	2nd	\$8
3rd	\$2	3rd	\$6
4th	\$1	4th	\$4

In Categories II and III, awards are shared between ensemble members, with a minimum of \$1 awarded. For example, if a 4-kid ensemble wins 2nd place, the \$8 prize is divided between all four members. The exception to this is for the Club performance. That award goes to the Club itself.



4-H News

PROJECT GRANTS

Now is your opportunity to apply for a 4-H Project Grant! Project Grants are for any 4-H member in Burnett County that needs some financial help to complete your 4-H project. There are several 4-H project grants available for youth (listed below). They are to help achieve 4-H goals in the project area designated by the grant. Each grant has specific requirements. You may apply for more than one grant (*please fill out separate application for each, form is the same for each*), however, each member can only be awarded up to one grant. Once you have received a grant, you are no longer eligible for it in the future. Application forms can also be found online.

NANCY CARLSON MEMORIAL GRANT

Nancy Carlson was a very active 4-H member. She was very involved in showing Guernsey cattle at the Grantsburg Fair.

Grant amounts and requirements: Five (5) \$20 grants will be awarded by the Leaders Association to Burnett County 4-H members who are 9-10 years old. An individual can receive this grant only once in their 4-H career. The grant can be used in any 4-H project area.

CLAIRE ERICKSON MEMORIAL GRANT

Claire Erickson was very involved with the horse project in Burnett County and taught children how to show horses. He was always involved in the Showdeo at the Grantsburg Fair.

Grant amounts and requirements: Two (2) \$25 grants are available from the family of Claire Erickson of Grantsburg. Applicants must be 4-H horse or horseless project members. An individual can receive this grant only once in their 4-H career.

BESSIE PETERSON MEMORIAL GRANT

This grant honors Bessie Peterson, a very special Burnett County individual who believed in the 4-H idea and the many benefits derived from active 4-H involvement.

Grant amounts and requirements: Six (6) \$25 grants will be awarded by the Leaders Association to Burnett County 4-H members who are 11-14 years old. Members must have shown achievement in the past two years of project work. Grants are for the purchase of materials for the achievement of 4-H goals.

MAXINE STONE MEMORIAL GRANT

Maxine Stone was a long-time 4-H leader who taught many youth in the areas of gardening. In order to continue her legacy this grant has been established to aid members in the horticulture project areas.

Grant Amounts and Requirements: Four (4) \$25 dollar grants will be awarded by the Leaders Association to Burnett County 4-H members in the horticulture/agriculture project areas. Members must have shown achievement in their past project work. Grants are to be used for your horticulture project area materials and projects.

Application forms
(next page) are **DUE** to
the UW-Extension
county office by the
last Friday in February
of each calendar year.



Burnett County 4-H Project Grant Application Form

Nancy Carlson Memorial Grant <input type="checkbox"/> (9 and 10 years old)	Claire Erickson Memorial Grant <input type="checkbox"/> (horse or horseless)	Bessie Peterson Memorial Grant <input type="checkbox"/> (11 to 14 years old)	Maxine Stone Memorial Grant <input type="checkbox"/> (gardening)
---	---	---	---

Name: _____ Birthdate: _____

Your Club: _____

Have you achieved in your project work the last two years? Yes No

Explain what you will do with the grant money and your project results.

Why did you choose this project?

Your Parent's (or Guardian's) Name(s): _____

Your Signature

Date

**Applications are due the last Friday in February of each year. Submit form to:
UW-Extension Burnett County, 7410 County Rd. K #107, Siren, WI 54872.**

You may apply for more than one grant. If applying for more than one grant, submit a form for each.



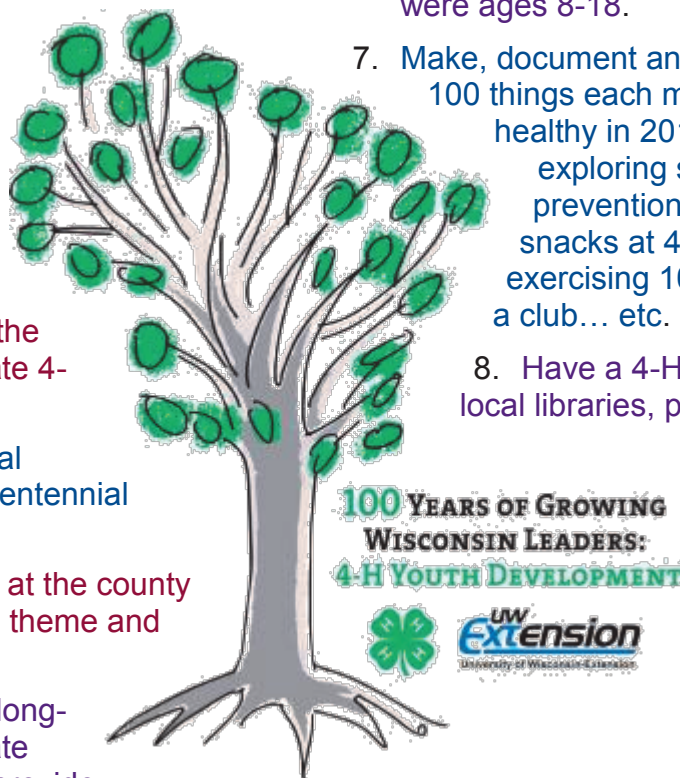
4-H News

WISCONSIN 4-H CENTENNIAL

Wisconsin 4-H turns 100 years old this year! For news and ideas of how to celebrate check out the Wisconsin 4-H Centennial website at <http://blogs.ces.uwex.edu/4hcentennial>.

WAYS TO CELEBRATE THE WISCONSIN 4-H CENTENNIAL

- Honor the 4-H leader who has the most continuous years of service.
- Put together a time capsule that will be buried and then reopened on the 150th anniversary of 4-H in your county.
- Have an ice cream social in your county courthouse and invite the town/county to celebrate 4-H's birthday.
- Create a float for a local parade and pass out centennial balloons or tattoos.
- Decorate trash barrels at the county fair with the centennial theme and logo.
- Have a 4-H party at a long-term care facility. Create games and decorate, provide refreshments using a 4-H theme. Have seniors share what life was like when they were ages 8-18.
- Make, document and track a club pledge of 100 things each member will do to be healthy in 2014. This could involve exploring substance abuse prevention issues, eating healthier snacks at 4-H club meetings, exercising 100 times, individually or as a club... etc.
- Have a 4-H Centennial display at local libraries, public buildings or?.
- Have a "remember when" radio spot featuring 4-H memories from our oldest alumni.
- Create a digital slide show to illustrate the history of 4-H in your county.



Animal Sciences



DATES TO REMEMBER

January

15 - **DEADLINE** to register for Ag Truth Not Tails Conference

24-25 - Ag Truth Not Tails Conference (*this page*)

AG TRUTH NOT TAILS CONFERENCE

Interested in learning and practicing skills to join the next generation of communicators for Wisconsin's livestock and dairy industry? Mark your calendar for the Ag Truths, Not Tails conference, coordinated by the University of Wisconsin-Extension. Enrollment is open to youth ages 13 to one year past high school in dairy, beef, sheep, swine and goat project areas. The conference will be held January 24-25, 2014 (Friday night stay and activities are optional) at the Beaver Creek Reserve, Fall Creek, WI.

Bring a team of youth and adults to these interactive networking sessions focused on animal welfare, led by leaders in the livestock and dairy industry.

Enrollment closes January 15, 2014. **This is a great opportunity for county educational credits.** For more information, visit the conference website at <http://fyi.uwex.edu/agtruthsnottails/>. Registration materials can be found at <http://fyi.uwex.edu/agtruthsnottails/registration-materials/>. Contact Bernie O'Rourke, Extension Youth Livestock Specialist, with questions at borourke2@ansci.wisc.edu.





Arts & Communication

DATES TO REMEMBER

January

6 - **DEADLINE** to register for 4-H Art Lab, <http://www.uwex.edu/ces/4h/events/artsleadership.cfm>

11 - Crex Photo Club, 10am-noon. (Crex Meadows Wildlife Area)

13 - Registration **DEADLINE** for ArtBeat North (*this page*)

31-Feb 1 - 4-H Art Lab

February

8 - Crex Photo Club, 10am-noon. (Crex Meadows Wildlife Area)

14-15 - ArtBeat North (*this page*)

CREX PHOTO CLUB

Second Saturday of the month, 10am - noon at Crex Meadows Wildlife Area.

Learn more about digital photography with the Crex Photo

Club. Share images taken at Crex Meadows WA and the surrounding area with fellow photographers to learn new techniques.

4-H ARTS IN WISCONSIN

4-H Arts in Wisconsin has a new website. See <http://fyi.uwex.edu/4hartswiscon>

for Art Lab, ArtBeat, Arts Camp, State Arts Groups, and more!

ARTBEAT! NORTH

February 14-15, 2014
The Beaver Creek Reserve
Fall Creek WI

Cost: \$50.00

Registration **DEADLINE**: Jan. 13, 2014

4-H ArtBeat! North is scheduled for Friday and Saturday, February 14-15, 2014, at the Beaver Creek Reserve, Fall Creek in Eau Claire County.

The weekend will feature a look at a variety of arts projects including music, drama, visual arts, arts and crafts, juggling and more! Also the weekend will feature some surprise performances created just for this year's ArtBeat!

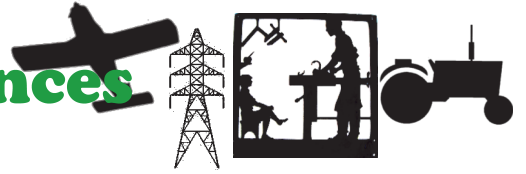
Go to <http://www.uwex.edu/ces/4h/events/4-HArtBeat.cfm> for information and applications.

Created for 4-H members in **grades 3-5** and their parents and leaders, 4-H ArtBeat! is the introductory program for Wisconsin 4-H Arts and Communi-





Mechanical Sciences



DATES TO REMEMBER

January

23 - County-wide LEGO Project Meeting, 4:45 - 5:45pm. (Government Center)

February

27 - County-wide LEGO Project Meeting, 4:45 - 5:45pm. (Government Center)



Hannah, being a great listener!



New 4 1/2 lbs of Legos bought with a grant from Herzl Camp.



We learned that snowflakes have 6 sides and many forms. Gracy made two!



Joel and his triangular form snowflake.



Dominic showing his Lego Christmas ornament



The car the group made by playing Lego Telephone

Homework for the January 23rd meeting is to make a house with a cat and a dog.



DATES TO REMEMBER

January

- 14 - 4-H Outdoors Skills Club, 6-7:30 pm. Topic: Snowshoe 101. (Crex Meadows Wildlife Area)

February

- 1 - 4-H Beekeeping Essay Contest **DEADLINE**. (*This page*)
- 11 - 4-H Outdoors Skills Club, 6-7:30 pm. Topic: Hunter Ethics. (Crex Meadows Wildlife Area)

4-H OUTDOOR SKILLS CLUB

Join Crex Meadows WA and Burnett County Cooperative Extension Service for the 4-H Outdoor Skills Club! Each meeting will focus on natural sciences and study topics such as outdoor education, forestry and aquatic science.

Meetings will be held on the second Tuesday of each month from 6pm-7:30pm at Crex Meadows WA.

Crex Meadows WA welcomes youth ages 9 – 18 who are interested in conservation projects, FREE of charge. Parents encouraged to attend.

4-H BEEKEEPING ESSAY CONTEST

The Foundation for the Preservation of Honey Bees annual essay contest topic for 2014 is:

Beekeeping in Colonial Times

To the earliest European settlers in the New World, honey bees were an important part of their existence. Cargo manifests show that honey bees were among the first shipments of animals. How were they shipped? Why were they important? Why were they so important to the colonists? How does that differ from today?

The scope of the research is an essential judging criterion, accounting for 40% of your score. The number of sources consulted, the authority of the sources, and the variety of the sources are all evaluated.

Personal interviews with beekeepers, farmers and others familiar with the subject are valued sources of information and should be documented. Sources, which are not cited in the endnotes, should be listed in a "Resources" or "Bibliography" list.

Note that "honey bee" is properly spelled as two words, even though many otherwise authoritative references spell it as one word.

For contest announcement and rules, go to

http://honeybeepreservation.org/wpcontent/uploads/2013/05/2014_4H_beekeeping_essay_rule_s.pdf.

Cash prizes will be awarded to the 3 Top Winners:

- 1st Place – \$750.00
- 2nd Place – \$500.00
- 3rd Place – \$250.00

Each state winner will receive a book about honey bees, beekeeping, or honey.

The contest is open to active 4-H Club members only. Each state 4-H Office is responsible for selecting the state's winner. Wisconsin 4-H'ers can submit their essays to terry.boehner@cesuwex.edu.

The **DEADLINE** for entry is February 1, 2014.





Youth Leadership

What's Your FOCUS?

What does it mean to be a good citizen or a leader? Are you being a strong civic leader for your community, country and world?

For more than 50 years, thousands of high school youth from all across the country have travelled to Washington, DC each summer to partake in the preeminent 4-H citizenship and leadership experience—[Citizenship Washington Focus](#). *And in summer 2014 we will introduce the precursor to CWF, the first national 4-H event designed exclusively for middle school 4-H'ers, [Leadership Washington Focus](#).*



We have welcomed high school 4-H'ers to put their leadership skills to work in their communities and now we are looking build more 4-H leaders with LWF so they can return as a delegate to CWF.

CWF and LWF are more than just another DC field trip – 4-H'ers learn essential civic leadership skills and leave with the tools that will allow them to bring about real change in their communities.

July 15-19, 2014

Leadership Washington Focus (LWF) is a 4-H leadership program for youth entering grades 7 through 9. The program will take place at the National 4-H Youth Conference Center, just 1 mile from the Washington, D.C. border. For more than 50 years, thousands of 4-H'ers have participated in our high school program, Citizenship Washington Focus and now we are happy to introduce its precursor for middle school 4-H'ers, LWF. Middle school 4-H delegates will:

- Build confidence in their ability to motivate and direct others in meaningful action
- Practice effective communication with others through group discussion and public speaking
- Work with others to create and accomplish goals
- Develop an understanding of their own personal leadership style
- Exchange ideas, practice respect, and form friendships with other 4-H'ers from across the nation.
- Experience hands-on learning using the historical backdrop of Washington, D.C.

DATES TO REMEMBER

January

10 - Registration **DEADLINE** for the new middle school-Leadership Washington Focus Trip. Go to www.4HLWF.org for more information.

13 - Junior Leaders' Meeting, 7pm, Government Center

February

10 - Junior Leaders' Meeting, 7pm, Government Center

CLUB NEWS

The next **Cloverbud Meeting** will be held on January 13 from 5:30pm - 6:30pm in Room 165 of the Government Center.

Amy Kopecky will be the leader.



After a couple hours of braiding and braiding and braiding, members of the **Wood Creek 4-H Club** made 52 dog pull-tug toys to donate to the Burnett County Humane Society. The toys were made of old t-shirts that were donated to the club by DSI in Siren. Thank you to them!

CLUB NEWS



Orange 4-H Club rang the Salvation Army bells for Christmas and caroled at Cedarwood Manor in Webster, where they also had their annual Christmas party.



4-H Leaders' Pages



DATES TO REMEMBER

January

13 - Leaders' Association Meeting. 7pm. Government Center

February

10 - Leaders' Association Meeting. 7pm. Government Center

VOLUNTEER ORIENTATION

All volunteers who work with 4-H youth in Burnett County must attend an orientation workshop. Volunteers who have not completed the orientation may attend an orientation in a neighboring county to fulfill this requirement while Burnett County is in the process of filling the 4-H agent position.

Barron County Volunteer Orientation Dates:

Thursday, January 9, 10am-11:30am

Pre-register at 715-537-6253 or mary.pardee@ces.uwex.edu

Douglas County Volunteer Orientation Dates:

Monday, January 20, 6:15pm-8pm

Northwestern High School, Maple, WI

Contact: (715) 395-1365, joan.wimme@ces.uwex.edu

Polk County Volunteer Orientation Dates:

Wednesday, January 22, 6pm

Thursday, February 27, 6:30pm

Thursday, April 24, 6:30pm

Polk County Orientation will be held at the Polk County Government Center. Pre-registration is required.

Contact: 715-485-8600 or charles.prissel@ces.uwex.edu.



VOLUNTEERS ARE SUPERHEROES!



Cooperative Extension

Cooperative Extension Programs

US Dept. of Agriculture

University of Wisconsin - Extension

Burnett County Extension Office

7410 County Road K, #107

Siren, WI 54872

Official Business

Penalty for Private Use, \$300

Burnett County 4-H Bugle

Burnett County

Government Center

Phone: (715) 349-2151

Fax: (715) 349-2102

Email: beth.greiff@ces.uwex.edu

Website: www.burnett.uwex.edu/4h

vacant, 4-H Youth and Family Development Educator

Mike Kornmann, Comm. Development Educator

Julie Yezek, Nutrition Education Program

Beth Greiff, Support Staff



Northwest District Office

Phone: (715) 635-9190

Julie Keown-Bomar, Regional Director

Vacant, Support Staff

Spoooner Agricultural Research Station

Phone: (800) 528-1914

Kevin Schoessow, Area Ag Agent

Richard (Otto) Wiegand, Area Ag Agent

An EEO/AA employer, University of Wisconsin-Extension provides equal opportunities in employment and programming, including Title IX and ADA requirements. Persons with disabilities who require alternative means for communication of program information should contact the UW-Extension office.

Burnett County 4-H Leaders Association Executive Committee

Phil Stiemann, President; Brian Webster, Vice President;

Sheryl Stiemann, Secretary; Charlene Strabel, Treasurer