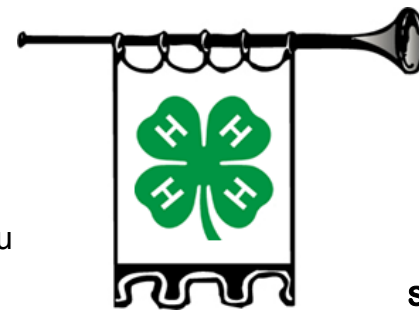


Burnett County 4-H Bugle

**Burnett County
Government Center**
Phone: (715) 349-2151
Fax: (715) 349-2102
Email: danielle.miller@ces.uwex.edu
Website: www.burnett.uwex.edu/4h
Danielle Miller, 4-H Youth and Family Development Educator
Mike Kornmann, Comm. Dev. Educator
Julie Yezek, Nutrition Education Program
Karen Burgett, Support Staff

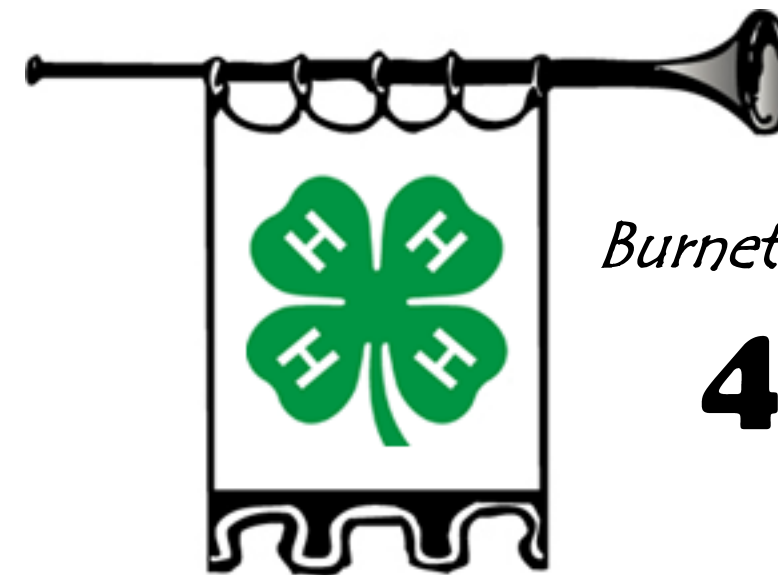


Northern District Office
Phone: (715) 635-9190
Kathy Miller, District Director
Cathy Crandall, Support Staff

Spoooner Agricultural Research Station
Phone: (800) 528-1914
Kevin Schoessow, Area Ag Agent
Richard (Otto) Wiegand, Area Ag Agent

An EEO/AA employer, University of Wisconsin-Extension provides equal opportunities in employment and programming, including Title IX and ADA requirements. Persons with disabilities who require alternative means for communication of program information should contact the UW-Extension office.

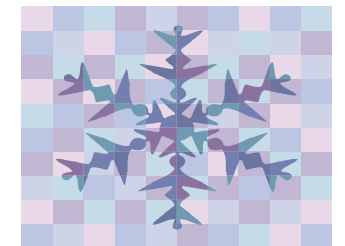
Burnett County 4-H Leaders Association Executive Committee
Phil Stiemann, President; Brian Webster, Vice President;
Sheryl Stiemann, Secretary; Charlene Strabel, Treasurer



Burnett County

4-H Bugle

January 2013



Happy New Year!

In this Issue...

Calendar.....	2
County 4-H Structure.....	3
Project Grants.....	4-5
4-H Scholarship/Bee Essay.....	6
Essential Element.....	7
New Family Night.....	7
Jr. Leaders/Care-Share.....	8
Committees.....	9
Club News.....	10
Cloverbuds.....	11
Arts Guild/Recycling.....	12
4-H Meats Judging.....	13
Club Assessment.....	13
Music Contest.....	14
MAQA.....	15
Ag News.....	16-17
Volunteers.....	18-19
4-H Arts.....	20-21
4-H Afterschool.....	22-23

As we look back at 2012 and into 2013 this might be the perfect time to expand the opportunities for older 4-H members in your club.

Providing an opportunity for teens in your 4-H club to teach younger 4-Hers can be beneficial to both the children whom they teach and the teens themselves. The younger children who are taught by teens benefit as they learn from positive role models. There are several reasons why teens are viewed as effective teachers of younger 4-Hers.

- ★ Teens are likely to do the activities along with the younger 4-Hers as opposed to merely talking about them or directing the children to do them.
- ★ Teens relate well to children. Teens have common bonds with younger children that adults lack as both age groups are still in school and doing school activities. Teens are better able than adults to communicate with children through talking, listening, and nonverbal cues.
- ★ Teens are valued by children. Teens are seen as a "magnet" for children. Young children generally like teens and want to be with them. The younger children look up to the teens and think they are "cool."
- ★ Teens' approach is positive, optimistic, and certain. Teens generally are motivated and find a way to get things done and make learning fun!

Teenagers can be extremely effective teachers of younger children. Teens benefit as they learn leadership skills, gain self-confidence, and a sense of accomplishment.

Thank you all for a great 4-H year in 2012 and we are looking forward to making 2013 even better!

-Danielle Ganje

Youth & Family Educator

Taken from Grant County 4-H Newsletter

4-H Calendar

January

- ~~12/13~~ ~~Winter Fun Day (Postponed until February)~~
- 14 Leaders Association and Jr. Leaders Meeting
- 16 4-H Afterschool, 3-5 PM, Siren
- 18-20 Winter Leadership Camp
- 21 County Cloverbud Meeting, 6-7 PM
- 22 Volunteer Orientation, 7-8PM, Gov. Ctr.
- 25 4-H New Family Welcome, 6-8PM, Room 165
- 25-26 AG Truths Not Tails Conf, Upham Woods
- 26 Music Contest, 6:30 PM, Siren School

February

- 1 Beekeeping Contest Entries Due
- 9 Super Saturday, Government Center
- 11 Committee Sign Up, Leaders & Jr. Leaders Mtgs.
- 13 4-H Afterschool, 3-5 PM, Webster Elementary
- 18 County Cloverbud Meeting, 6-7 PM
- 22-23 Art Lab, Upham Woods, WI Dells
- 25 Annual Leader Training, 6-8 PM, Room 165
- 28 Project Grants Due

March

- 8 Cultural Arts Registrations Due
- 8-9 Art Beat North, Beaver Creek, Eau Claire
- 11 Leaders & Jr. Leaders Meeting, 7 PM
- 13 4-H Afterschool, 3-5 PM, Grantsburg
- 15-16 Art Beat South, Upham Woods, WI Dells
- 18 County Cloverbud Meeting, 6-7 PM
- 23 Cultural Arts Festival, Siren

4-H Afterschool!!!

Where? Siren Elementary Room

When?...Afterschool! (Approximately 3-5p.m.)

What? 4-H Camp Comes to Afterschool

1: Listening to Friends: 4-H Afterschool activity where youth make an original craft with duct tape to express themselves and share thoughts and ideas with other friends.

What is 4-H?

4-H is an experiential youth education program for boys and girls in Kindergarten (K-5) through one year after high school graduation. Youth belong to a 4-H club or group in local communities. They plan, lead and participate in group activities and community service events. The Cloverbud program is for youth in grades K-2 and emphasizes cooperative learning. Youth in grades 3 and higher select areas of special interest for learning called projects. Projects include anything from aerospace to photography and beyond. Youth also participate in camps, fairs, leadership workshops or other local, county or state events. In Wisconsin, 4-H is the youth development program of the University of Wisconsin-Extension. Each county has a UW-Extension office that administers the 4-H youth development program and provides partnering support through local tax dollars. At the national level, 4-H is part of the National Institute of Food and Agriculture (NIFA) within the U.S. Department of Agriculture (USDA), the federal partner of the state land-grant University. As a 4-H volunteer, you are a volunteer educator for the University of Wisconsin-Extension. Through your county UW-Extension office, you have access to university research and curricula developed to have the greatest positive impact on youth.

How Does 4-H Work? The focus of 4-H is providing youth the essential elements of positive youth development so they grow into capable, competent adults. In 4-H, volunteer leaders encourage youth to gain knowledge and learn life skills through their project work and club/group activities. Youth members learn practical life skills like planning, decision making, and working together as a team. During 4-H meetings, members learn how to communicate, practice leadership skills, and develop strong character traits. Through community service activities, members learn how to be responsible citizens who contribute to their communities.

Each year, 4-H members are challenged to set higher goals, become more knowledgeable about their projects, and assume greater leadership responsibilities within their club and the county 4-H program. They develop positive attitudes about themselves and others and learn how to set and achieve realistic goals. All of this does not happen at once, but develops gradually as members continue their involvement in 4-H with the guidance of their 4-H volunteer leaders.

The Meaning of the 4-H Pledge. Over its 100-year history, 4-H has developed traditions that help define its culture and identity, such as the recitation of the 4-H pledge. Here are some ways you can help youth carry out the 4-H pledge. **I Pledge:**

My HEAD to clearer thinking - Give youth opportunities to lead simple tasks at first and take on more responsibility as they grow. Avoid jumping in to help unless you are really needed. Encourage young people to overcome obstacles on their own. Encourage, motivate, and praise members who complete leadership roles.

My HEART to greater loyalty - Create opportunities for 4-H members to interact with each other through games, group tasks, and their 4-H project work. Develop traditions to welcome new members and celebrate individuals. Find ways to involve family and community members in as many activities as possible.

My HANDS to larger service, and - Have the group adopt a service project that fits their interests and meets a community need. Arrange tours of local sites and opportunities for youth to learn from others in the community. Encourage youth to consider the feelings of others.

My HEALTH to better living - Help youth find resources to explore their 4-H projects and activities. Provide project learning experiences. Model and teach that failure or frustration is not a disgrace but a part of the learning experience. Be fair and consistent when enforcing rules and giving feedback.

FOR MY CLUB, MY COMMUNITY, MY COUNTRY, AND MY WORLD



Extraordinary Opportunities!

What is 4-H Afterschool? 4-H Afterschool is partnering with schools and other community based organizations to improve the quality and quantity of afterschool programs. Keeping young people safe, helping working families and inspiring learning are all part of 4-H Afterschool activities. 4-H helps to support youth, parents and community during critical hours when school is over. 4-H Afterschool is an Extension-enhanced program that:

- ★ offers youth a safe, healthy, caring, and enriching environment
- ★ engages youth in long-term, structured learning in partnership with adults
- ★ addresses the interests of youth and their physical, cognitive, social, and emotional needs

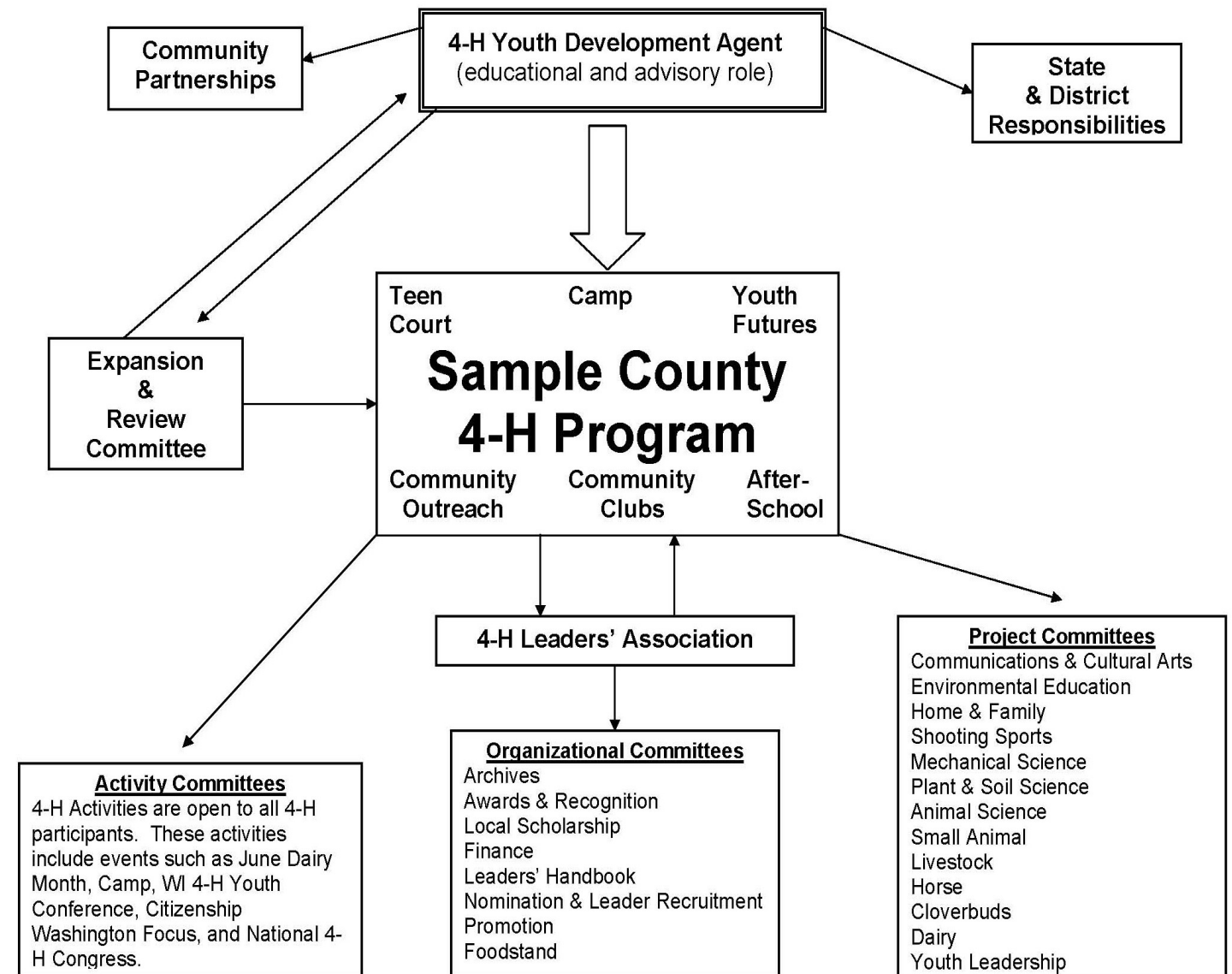
How will 4-H Afterschool look in Burnett County? In 2013, Burnett County 4-H will host one Afterschool program a month at each of the local elementary schools. The afterschool program will rotate between Siren, Webster, and Grantsburg schools. 4-H staff and volunteers will partner with existing Afterschool programs, or independently conduct their own program in collaboration with school staff. 4-H volunteers will help the staff conduct the indicated programs and lessons through games, songs, activities, and other fun, hands-on learning opportunities.

When is it? 4-H Afterschool will take place the Wednesday after each Leaders' meeting. (Typically the 2nd or 3rd Monday of the month. Check the Bugle for exact times and locations.

What kinds of things will kids do? Burnett County 4-H will be bringing 4-H Camp to Afterschool! Summer Camp is something everyone loves, and has many benefits for the youth involved. One thing that always stands out from 4-H camp is the friendships that are formed. Burnett County 4-H Afterschool will bring lessons from 4-H Camp to each school in Burnett County focusing on friendship and communication. Including: Listening to Friends, Meeting New Friends, Talking with Friends, and Teaming up with Friends.

4-H Organizational Structure...

For those curious minds out there. While the structure of a county 4-H program varies from county to county, there are consistent foundations in all county programs. 4-H groups and associations are accountable to Cooperative Extension for their activities and finances.



**\$\$ Interested in earning some extra money \$\$
for some of you 4-H Projects?...
...Uh, Yeah! Who isn't?!**



Now is your opportunity to apply for a 4-H Project Grant! Project Grants are for any 4-H member in Burnett County that needs some financial help to complete your 4-H project. There are several 4-H project grants available for youth (listed below). They are to help achieve 4-H goals in the project area designated by the grant. Each grant has specific requirements. You may apply for more than one grant (please fill out separate application for each, form is the same for each), however each member can only be awarded up to one grant. One you have received a grant, you are no longer eligible for it in the future. Application forms can also be found online.

4-H Grants

Nancy Carlson Memorial Grant

History: Nancy Carlson was a very active 4-H member. She was very involved in showing Guernsey cattle at the Grantsburg Fair.

Grant amounts and requirements: Five (5) \$20 grants will be awarded by the Leaders Association to Burnett County 4-H members who are 9-10 years old. An individual can receive this grant only once in their 4-H career. The grant can be used in any 4-H project area.

Claire Erickson Memorial Grant

History: Claire Erickson was very involved with the horse project in Burnett County and taught children how to show horses. He was always involved in the Showdeo at the Grantsburg Fair.

Grant amounts and requirements: Two (2) \$25 grants are available from the family of Claire Erickson of Grantsburg. Applicants must be 4-H horse or horseless project members. An individual can receive this grant only once in their 4-H career.

Bessie Peterson Memorial Grant

History: This grant honors Bessie Peterson, a very special Burnett County individual who believed in the 4-H idea and the many benefits derived from active 4-H involvement.

Grant amounts and requirements: Six (6) \$25 grants will be awarded by the Leaders Association to Burnett County 4-H members who are 11-14 years old. Members must have shown achievement in the past two years of project work. Grants are for the purchase of materials for the achievement of 4-H goals.





Application forms are due to in the UW-Extension county office by the last Friday in February of each calendar year.

Maxine Stone Memorial Grant

History: Maxine Stone was a long-time 4-H leader who taught many youth in the areas of gardening. In order to continue her legacy this grant has been established to aid members in the horticulture project areas.





Grant Amounts and Requirements: Four (4) \$25 dollar grants will be awarded by the Leaders Association to Burnett County 4-H members in the horticulture/agriculture project areas. Members must have shown achievement in their past project work. Grants are to be used for your horticulture project area materials and projects.

2013 Wisconsin 4-H Arts Program and State Group Opportunities

 <p>4-H SHOWCASE SINGERS http://fyi.uwex.edu/4hartswisconsin/</p>	 <p>For Middle School 4-Her's http://fyi.uwex.edu/4hartswisconsin/</p>	 <p>For High School age 4-Her's http://fyi.uwex.edu/4hartswisconsin/</p>	 <p>For 4-Her's in grades 3-5 http://fyi.uwex.edu/4hartswisconsin/</p>
<p>What is it? Since 1987 the Wisconsin 4-H Showcase Singers have been dazzling audiences at the Wisconsin 4-H & Youth Conference, the Wisconsin State Fair and more! The group is comprised of 4-H members, high school age and older who perform "show choir" material.</p>	<p>What is it? A camp for middle school 4-Her's in grades 5-8. Campers are taught by older 4-H youth and rotate through each session. Sessions include photography, music, drama, communications, visual arts and juggling!</p>	<p>What is it? An exciting weekend of going "In-depth" with your favorite arts topic! Sessions will include painting & drawing, theatre, choreography, photography, culinary arts, leather craft, clowning, fiber art and much, much more!</p>	<p>What is it? There are TWO camps for 4-H members in grades 3-5 and their parents and leaders. Sessions are taught in music, drama, visual arts, arts and crafts, juggling and more!</p>
<p>Application Requirements: Youth who are presently in high school are eligible to apply. Interested youth must complete the on-line application available here: http://fyi.uwex.edu/4hartswisconsin/ AND</p> <ul style="list-style-type: none"> Submit a DVD/Video of a musical performance that highlights your singing & dancing ability. 	<p>Application Requirements: Applicant forms are available here: http://fyi.uwex.edu/4hartswisconsin/ Just click on the appropriate tab</p>	<p>Application Requirements: Applicant forms are available here: http://fyi.uwex.edu/4hartswisconsin/ Just click on the appropriate tab</p>	<p>Application Requirements: Applicant forms are available here: http://fyi.uwex.edu/4hartswisconsin/ Just click on the appropriate tab</p>
<p>Time Commitment:</p> <ul style="list-style-type: none"> Prep weekend April 5-6, 2013), Camp Upham Woods June 19-23, 2013, UW-Madison just prior to WI 4-H & Youth Conference WI 4-H & Youth Conference, UW-Madison, June 24-27 Wisconsin State Fair, August 2013 	<p>Time Commitment/Location: Saturday and Sunday, October 2013 (specific dates TBA later) Counselors meet for two days August, 2013 (specific dates TBA later) and on Friday evening prior to Arts Camp, which is held at Camp Upham Woods, near the Wisconsin Dells.</p>	<p>Time Commitment/Location: Friday, February 22 at 7 pm. to Saturday, February 23 at 3 pm. 4-H Camp Upham Woods Wisconsin Dells.</p>	<p>Time Commitment/Location: Friday evening and Saturday, ArtBeat! North March 8-9, 2013, at The Beaver Creek Reserve, Eau Claire County ArtBeat! South March 15-16, 2013 Camp Upham Woods, Wisconsin Dells</p>
<p>Application Deadline: January 28, 2013 Cost: \$575 Scholarships available</p>	<p>Application Deadline: May 1 - Counselors Sept. 1 - Campers Cost: TBA</p>	<p>Application Deadline: January 25, 2013 Cost: \$50.00</p>	<p>Application Deadline: 2013 ArtBeat! North-January 25 ArtBeat! South- February 1 Cost: \$50.00</p>
<p>Chaperone Needs: A minimum of one male and one female chaperone are needed for each 15 youth for all of the rehearsal and performance times.</p>	<p>Adult Leader/Chaperone Needs: Adults are needed to assist with leadership and chaperone roles during the camp and counselor training.</p>	<p>Adult Leader/Chaperone Needs: Adults are needed to assist with leadership and chaperone roles during the camp. Adults participate in leader training activities.</p>	<p>Adult Leader/Chaperone Needs: Adults are needed to assist with leadership and chaperone roles during the camp. Adults participate in leader training activities.</p>
<p>For additional information contact: Christina Rencontre 608-262-1536 christina.rencontre@ces.uwex.edu</p>	<p>For additional information contact: Christina Rencontre 608-262-1536 christina.rencontre@ces.uwex.edu</p>	<p>For additional information contact: Christina Rencontre 608-262-1536 christina.rencontre@ces.uwex.edu</p>	<p>For additional information contact: Christina Rencontre 608-262-1536 christina.rencontre@ces.uwex.edu</p>

2013 WISCONSIN 4-H ARTS PROGRAMS AND STATE GROUP OPPORTUNITIES

Here in one place is a brief description of many key opportunities that are available for Wisconsin 4-H youth and adults in the Arts and on State Groups. In order to make things easier many of the deadlines for applying for these opportunities are the same.

 <p>4-H ART TEAM http://fyi.uwex.edu/4hartswisconsin/</p>	 <p>4-H PRESS TEAM http://fyi.uwex.edu/4hartswisconsin/</p>	 <p>4-H DRAMA COMPANY http://fyi.uwex.edu/4hartswisconsin/</p>	 <p>STATE YOUTH LEADER COUNCIL http://www.uwex.edu/ces/4h/youth/leadership.cfm</p>
<p>What is it? State Art Team creates artwork around a theme for WI 4-H & Youth Conference. They design and organize the WI 4-H & Youth Conference Art Exhibit, reception, and provide guided exhibit tours. They teach seminars and train to be peer leaders for county and regional events including the Wisconsin State Fair.</p>	<p>What is it? The State 4-H Press Team of 14-16 youth photographers and videographers take digital photos and video clips of Conference events and group, and prepares a conference slideshow presentation. The Press Team also participates at the Wisconsin State Fair!</p>	<p>What is it? An exciting opportunity for high school youth to serve as theatre ambassadors. At WI 4-H & Youth Conference, youth will share their skills through a performance and teaching seminars. The Drama Co. will also perform for the first six days of the Wisconsin State Fair!</p>	<p>What is it? Wisconsin 4-H Youth Leader Council (YLC) are youth leaders representing districts throughout Wisconsin with the purpose to strengthen 4-H Youth Development programs by promoting 4-H, providing leadership at Wisconsin 4-H & Youth Conference, and communicating needs between local and state levels.</p>
<p>Application Requirements: Youth who are presently in high school are eligible to apply. Interested youth must complete the on-line application available here: http://fyi.uwex.edu/4hartswisconsin/ Just click on the appropriate tab</p>	<p>Application Requirements: Youth who are presently in high school are eligible to apply. Interested youth must complete the on-line application available here: http://fyi.uwex.edu/4hartswisconsin/ And send 5 candid photos of people to Press Team Director.</p>	<p>Application Requirements: Youth who are presently in high school are eligible to apply. Interested youth must complete the on-line application available here: http://fyi.uwex.edu/4hartswisconsin/ Just click on the appropriate tab</p>	<p>Application Requirements: Applicant forms are available at http://www.uwex.edu/ces/4h/youth/leadership.cfm Reference from local 4-H Youth Development Agent is required. Eligibility Requirements: 1. Completed 8th and not exceeded the completion of 11th grade 2. Elected to represent one of the six Extension districts</p>
<p>Time Commitment/Location:</p> <ul style="list-style-type: none"> • Prep weekend April 5-6, 2013), Camp Upham Woods • June 20-23, 2013, UW-Madison just prior to WI 4-H & Youth Conference • WI 4-H & Youth Conference, UW-Madison, June 24-27 • Wisconsin State Fair, August 2013 	<p>Time Commitment/Location:</p> <ul style="list-style-type: none"> • Prep weekend April 5-6, 2013), Camp Upham Woods • WI 4-H & Youth Conference, UW-Madison, June 23-27 • Wisconsin State Fair, August 2013 	<p>Time Commitment/Location:</p> <ul style="list-style-type: none"> • Prep weekend April 5-6, 2013), Camp Upham Woods • June 20-23, 2013, UW-Madison just prior to WI 4-H & Youth Conference • WI 4-H & Youth Conference, UW-Madison, June 24-27 • Wisconsin State Fair, August 2013 	<p>Time Commitment/Location: Member Requirements</p> <ul style="list-style-type: none"> • Fall Forum (Nov. 3, 2012), Spring Retreat (TBA, 2013) • June 23-27, 2013, WI 4-H & Youth Conference • Other Statewide events: WI State Fair, WI 4-H Foundation Fundraisers • Fulfill committee work
<p>Application Deadline: January 28, 2013 Cost: \$575 Scholarships available</p>	<p>Application Deadline: January 28, 2013 Cost: \$475 Scholarships available</p>	<p>Application Deadline: January 28, 2013 Cost: \$575 Scholarships available</p>	<p>Application Deadline: Sept. 1 Elections are held at Fall Forum Cost: \$100, typically funding can be secured through your county's Leaders Association.</p>
<p>Chaperone Needs: A minimum of one male and one female chaperone are needed for each of the April and June weekends and Conference.</p>	<p>Chaperone Needs: A minimum of one male and one female chaperone are needed for each, the weekend in March and Conference.</p>	<p>Chaperone Needs: A minimum of one male and one female chaperone are needed for each 15 youth for rehearsal and performance times.</p>	<p>Chaperone Needs: The Council has two adult advisors and support from the 4-H Youth Development Office.</p>
<p>For additional information contact: Christina Rencontre 608-262-1536 christina.rencontre@ces.uwex.edu</p>	<p>For additional information contact: MaryBeth Seib 920-296-2851 w4hpressteam@gmail.com</p>	<p>For additional information contact: Christina Rencontre 608-262-1536 christina.rencontre@ces.uwex.edu</p>	<p>For additional information contact: Betsy Olson 608 723 2125 betsy.olson@ces.uwex.edu</p>



Burnett County 4-H Project Grant Application Form

<p>Nancy Carlson Memorial Grant <input type="checkbox"/> (9 and 10 years old)</p>	<p>Claire Erickson Memorial Grant <input type="checkbox"/> (horse or horseless)</p>	<p>Bessie Peterson Memorial Grant <input type="checkbox"/> (11 to 14 years old)</p>	<p>Maxine Stone Memorial Grant <input type="checkbox"/> (gardening)</p>
--	--	--	--

Name: _____ Birthdate: _____

Your Club: _____

Have you achieved in your project work the last two years? Yes No
(Above question applies to applicants of the Bessie Peterson Grant.)

Explain what you will do with the grant money and your project results.

Why did you choose this project?

Your Parent's (or Guardian's) Name(s): _____

Your Signature _____

Date _____

**Applications are due the last Friday in February of each year. Submit form to:
UW-Extension Burnett County, 7410 County Rd. K #107, Siren, WI 54872.**

You may apply for more than one grant. If applying for more than one grant, submit a form for each.

4-H Foundation Scholarship Application Available

The Wisconsin 4-H Foundation and generous sponsors are proud to provide educational scholarships to outstanding Wisconsin 4-H youth for the 2013-2014 academic school year. We are pleased to provide these scholarships in order to show our appreciation for 4-H your accomplishments as a result of their 4-H experiences, and to support their future educational goals.



Applications are available from the Wisconsin 4-H Foundation's website at: www.wis4hfoundation.org.

The application is available in editable Adobe Acrobat format. The Adobe Acrobat application can be completed online, but may not be able to be saved on your computer for future reference.

Completed applications must be e-mailed by Friday, February 15, 2013.

Scholarship recipients will be announced in May of 2013.



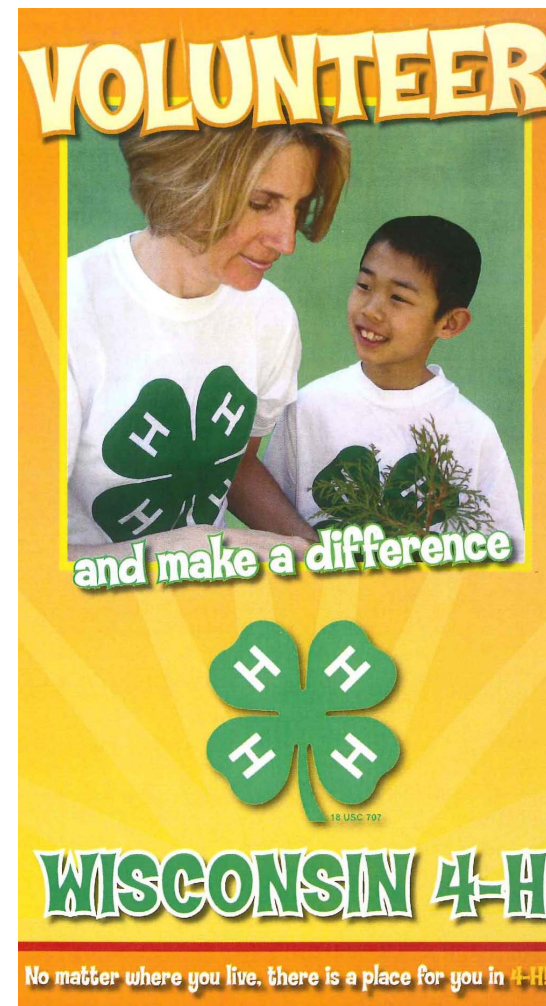
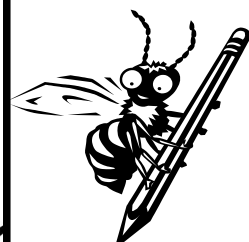
Recipients of Wisconsin 4-H Foundation scholarships will be selected based upon their 4-H involvement, scholastic achievement, and future educational and career goals.

Please contact the Wisconsin 4-H Foundation with questions at (608) 262-1597

4-H BEEKEEPING ESSAY CONTEST

The Foundation for the Preservation of Honey Bees announces the 2013 4-H Beekeeping Essay Contest with cash prizes awarded to the top 3 winners. The essay topic is: *Reducing the Usage of Bee-Killing Pesticides in my Community*. Essay rules and more information is available at:

<http://honeybeepreservaion.org/2012/05/2013-essay-contest-topic/>. All entries must be sent electronically to terry.boehner@ces.uwex.edu by noon on February 1, 2013.



VOLUNTEER!

Make the best investment of all... invest in the life of a child! Share your talents, your knowledge and your skills. Giving back by volunteering has been a hallmark of the 4-H Program for over 100 years!

Join the ranks of over 15,000 Wisconsin 4-H Volunteers by engaging, challenging and inspiring the young people in their communities.

Dates for Volunteer Orientation & Youth Protection Training:

- ★ January 14th, 6-7 p.m. (prior to the Leaders & Junior Leaders meetings)
- ★ January 22, 7-8 p.m.
- ★ By appointment, may call Dani for an individual or group appointment. Training takes approximately 1 hour and can be done during the day if preferable.



VOLUNTEERS



In 4-H Youth Development, volunteer development is a priority. Volunteer development engages individuals in an ongoing educational process, designed to build capacities for service roles.

A 4-H Youth Development volunteer offers their time, talent and/or resources to 4-H Youth Development educational program without monetary expectation. It is a privilege to serve as a volunteer for the 4-H Youth Development Program! And we value our volunteers!

In 4-H Community Clubs, volunteers contribute in a variety of ways. Many volunteers lead projects for a local year-round club or short-term 4-H committees and activities. There are many ways that volunteers get involved.

Volunteer Orientation provides volunteers with an understanding of the organization's mission as well as the responsibilities and expectations of volunteers. Training is important to prepare the volunteer for their specific role. 4-H Youth Development programs and activities must be supervised by an adult, 18 years of age or older, who has completed the Youth Protection program and is currently an enrolled 4-H volunteer leader. The primary purpose of this process is to ensure the safety and well-being of all participants (i.e., youth, their parents and families, salaried and volunteer staff.)

To complete the Youth Protection Program and officially be enrolled as a 4-H Volunteer Leader an adult must:

- Be 18 years and over
- Participate in the Youth Protection Program (Volunteer Orientation).
- The Wisconsin 4-H Youth Development Youth Protection program process includes:
 - Completion of the Volunteer Application Form.
 - Background records check for arrest and conviction records through the approved channels.
 - Participation in volunteer orientation.
 - Completion of the Volunteer Behavior Expectations Form (may be combined with the 4-H enrollment form)
 - Completion of the 4-H Enrollment Form
- In order to continue as a 4-H volunteer leader in the Wisconsin 4-H Youth Development program beyond the first year, all adults 18 years of age and over must annually complete the following: a. Volunteer Behavior Expectations Form (may be combined with the 4-H enrollment form) b. 4-H Enrollment Form.
- *Note: A background records check for arrest and conviction records will be completed every four years for continuing 4-H volunteer leaders.*
- Returning volunteers who have been absent one to four years need the background records check, signed Volunteer Behavior Expectations form, but are not required to attend the orientation to be reinstated as a volunteer.
- Returning volunteers who have been absent five or more years need to repeat the entire Youth Protection process.



The Essential Elements of 4-H Youth Development... Independence

The “I” in the BIG-M model of 4-H Essential Elements is Independence. Youth need to know that they are able to influence people and events through decision-making and action. By exercising independence through 4-H leadership opportunities in 4-H clubs, youth develop self-discipline and responsibility, learn to better understand themselves and become independent thinkers. If Belonging was the Heart of the four H's, then Independence is the Head. This Element is impacted by:

- An opportunity to see oneself as an active participant in the future
- An opportunity for self-determination

Empowering the next generation of leaders through positive youth development experiences is a core focus of 4-H work, and part of encouraging our members to be leaders is helping them see the way they can impact the world around them. We find opportunities to grow Independence at every level of involvement in 4-H, whether it's having 4-H Afterschool youth help choose the day's activity, youth assuming leadership roles in 4-H community clubs and making decisions about what *they* want to do or gaining greater experience in civic life through Youth in Governance or Teen Court programs.


New 4-H Family Welcome

We would like to welcome all new 4-H members and families to the Burnett County 4-H Program! We are excited that you have joined and hope you are looking forward to a wonderful year of learning and fun in 4-H. To help you and your family get off to a great start, we are inviting you to the government center & UWEX office on Monday, January 25 from 6:00—8:00 PM. There will be a Q&A session, games, food and enjoyment for everyone! The new 4-H Family Welcome Night is an opportunity for families to gain a better understanding of what 4-H is, learn more about all the great opportunities available for youth and families in 4-H, connect with 4-H staff and leaders and meet other new 4-H families. There will be hands-on activities for the youth and time for individual questions! All new 4-H families and/or any returning families interested in learning more about the Burnett County 4-H Program and all the great opportunities available through 4-H!



Find us on Facebook!

Burnett County 4-H is now on Facebook! Become a fan today!

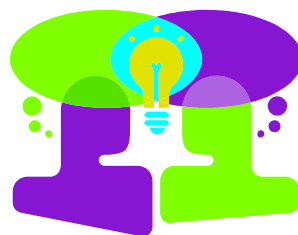
It's Easy! Search “Burnett County 4-H” and select “Like”!  1 You like this.

JR Leader Happenings

All youth 7th grade and over are welcome and encouraged to attend Junior Leader Meetings and Events. We are gearing up and getting ready for a great new year of opportunity! Join us on January 14th @7 pm. You won't want to miss out! We'll be meeting in room 162 @ the Government Center. Don't miss your chance to make a difference, meet new people, gain leadership skills and take 4-H to a whole new level!

4-H CARE-TO-SHARE

Do you have a concern about something happening in the 4-H Program or a positive comment you'd like to share? Have you struggled with not knowing how to share your ideas, concerns and/or thoughts so the right people get the right information? Well...if you have ever been in one of those situations or you currently are - we have the perfect tool to help you share. Care-to-Share Forms are available at the UW-Extension Office. We want to know if there are any issues or concerns that we can help address. Care-to-Share forms are a tool designed to help you share your thoughts and concerns. I will get back to you and let you know how we are addressing or working through your particular situation or concern.



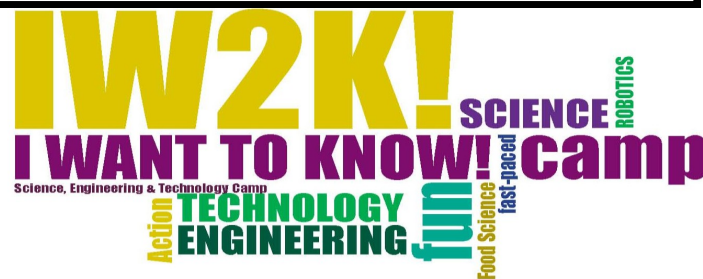
Save the Date!
Saturday, February 9, 2013,
1-3 p.m.

4-H SUPER SATURDAY!!!

A Community Event

Fun for Everyone

4-H Super Saturday is coming for youth, parents, 4-H leaders, and everyone. It is free and open to all, so tell a friend! Join youth from around the county for a fun filled educational day. The day will have a theme with games, learning and fun centered around that topic! More information to come.



Do you like science, technology or engineering? Have you always wanted to know what makes things work? Would you like to do cool, hands-on experiments? If so, then I Want To Know! Camp is for you.

APRIL 12-13, 2013 6 pm arrival | 4 pm departure

UPHAM WOODS 4-H CAMP Wisconsin Dells, WI

Grades 6-8 | \$55 - Includes meals, lodging, t-shirt, & supplies

REGISTRATION DUE MAR 8 Space is LIMITED!

Registrations will be taken on a first come basis with a waiting list if necessary. Sign up TODAY! Special financial circumstances will be handled on an individual basis.

For more information, contact Joanna Skuzacek, UW-Extension 4-H STEM specialist at 608.265.2949 or Joanna.Skuzacek@ces.uwex.edu or visit <http://www.uwex.edu/ces/4h/events/iwantknowcamp.cfm>



"Ag Truths Not Tails"

When: January 25—26, 2013
Where: Upham Woods, Wisconsin Dells, WI
Friday: 7—9 p.m. Evening Social Activities—games, etc. (optional)
Saturday: 8:00 to 8:30 a.m. registration, Program starts at 8:30 a.m.
For: Youth enrolled in Beef, Sheep, Swine, Dairy and Goats; age of January 1, 2013, age 13 to one year past high school.

UW Extension



Opportunity to learn and practice skills to become the next generation of communicators for Wisconsin's Livestock & Dairy Industry. Interactive, networking sessions will focus on Animal Welfare from leaders in the Livestock & Dairy Industry. Speakers from UW Extension, World Dairy Expo, and others will lead your experience.

Cost Options:

1. Individual —\$25
 2. Team of 3 youth with 1 adult = \$75, each additional member is \$20.
- Lodging for Friday Night—Add \$20**

Fees are Nonrefundable

For More information View the Conference Site at:
<http://fyi.uwex.edu/agtruthsnottails/>

clip and mail

Name _____
Parents Name _____
Address _____
City _____ State _____ Zip _____
Phone _____
Email _____
County/Chapter _____ Grade/Age _____ Gender M F
Arrive Friday: _____ Yes _____ No
Photo Release _____ Yes _____ No _____ Parent/Guardian Signature _____



Make checks payable to: **UWEX** Indicate other team members: _____
Mail directly to:
Attn: Lynn Pfeiffer
430 Lowell Center
610 Langdon Street
Madison, WI 53703
Due before Jan. 16, 2013

Include health & expectation form. Mail all team registrations with funds in one envelope!

Questions on the conference, contact: Bernie O'Rourke, Extension Youth Livestock Specialist, borourke2@ansci.wisc.edu, (608) 263-4304.

AG NEWS

Ag Truths Not Tails Conference, January 25-26, 2013

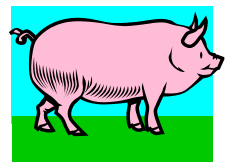
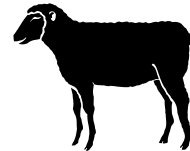
Interested in learning and practicing skills to join the next generation of communicators for Wisconsin's livestock and dairy industry? Mark your calendar for the Ag Truths, Not Tails conference, coordinated by the University of Wisconsin-Extension. Enrollment is open to youth ages 13 to one year past high school in dairy, beef, sheep, swine and goat project areas. The conference will be held January 25-26, 2013 (Friday night stay and social activities are optional) at the Upham Woods 4-H Environmental Education Center in Wisconsin Dells.

Bring a team of youth and adults to these interactive networking sessions focused on animal welfare, led by leaders in the livestock and dairy industry.

Enrollment closes January 16, 2013. **This is a great opportunity for county educational credits.** For more information, visit the conference website at <http://fyi.uwex.edu/agtruthsnottails/>. Registration materials can be found at <http://fyi.uwex.edu/agtruthsnottails/registration-materials/>. Contact Bernie O'Rourke, Extension Youth Livestock Specialist, with questions at 608-263-4304 or borourke2@ansci.wisc.edu.

4-H Livestock Quiz Bowl and State 4-H Skillathon Contests Scheduled for March 2, 2013.

The 4-H Livestock Quiz Bowl and State 4-H Skillathon contest will be held together on Saturday, March 2, 2013 at UW Madison Animal Sciences Building, Madison, WI. Deadline for registration is Friday, February 22, 2013. The cost is \$6 per youth. Registration starts at 9 a.m., competitions start at 9:30 a.m. Teams are encouraged to participate in both contests as they will be occurring at the same time. Senior teams will start with the Skillathon contest. Junior and Mixed teams will complete the Skillathon Contest as soon as their team is finished with Quiz Bowl and the Seniors have completed the Skillathon Contest. The planning committee reserves the right to alter schedule if needed.



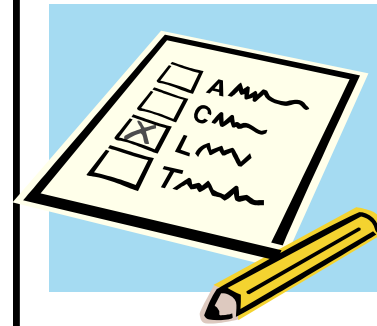
The teams are divided into three age divisions and teams can consist of 3 or 4 members. The junior division is youth who are under 14 years of age as of January 1, 2013. The senior division are youth who are all 14 years of age or older as of January 1, 2013. A mixed team must contain at least one youth from each age division.

Livestock Bowl is a quiz competition where all the questions are about beef, sheep, swine, and meat goat topics and students use a buzzer in order to answer the questions. Teams compete in a double elimination format by giving oral answers to questions posed by a moderator. Each match has both an individual and toss-up question round. The winning 4-H senior team will represent Wisconsin at the National 4-H Livestock Quiz Bowl competition in Omaha, NE at the AKSARBEN Livestock Exhibition.

Skillathon contest is made up of a written quiz and learning stations such as breed identification, feed identification, equipment identification as well as some team activities such as demonstrating evaluation skills. The top Senior level 4-H team will represent Wisconsin at the National 4-H Skillathon Contest, held each fall in Louisville.



4-H COMMITTEE SIGN UP FOR 2013



Are you looking for new and different ways to get involved with the Burnett County 4-H Program? Have you ever wondered why some things change or how changes are made? The answer to both questions is through county committees. Early in the year is the best time for families to evaluate their role in 4-H and decide how much they want to be involved at the county level. If you are interested in a certain Project Area, Activity, or can offer a certain skill to the 4-H organization join us! This meeting is for you to see what committees exist, form new ones, and meet with others that share the same passion! If you are interested or have some expertise to share in an area listed below, then please meet us in **room 165 before the Leaders meeting @ the Government Center on Feb. 11th @ 6 pm.** We would welcome any new members to join committees and help "Make the Best Better" in Burnett County!

General Committees / Special Interest

Financial Management

- Audit
- Budget

Administration

- Land Use
- Charter Renewal
- Plat Book

Marketing and Promotion

- Window Display Contest

Awards & Recognition

- Banquet
- Awards

Intergenerational

Activity Committees

County Trip/Exchange

Winter Fun Day

Talent Show

Cloverbud Camp

Camp

Project Committees

Youth Leadership

Younger Members

Animal Sciences

Arts & Communications

- Communications Contest
- Demonstrations Contest
- Drama Contest
- Photography Contest
- Music Contest

Family, Home & Health

- Foods & Dress Revue

Mechanical Sciences

Natural Resources & Environmental Education

Plant & Soil Sciences

- Garden Tour Contest

STEM (Science, Engineering, Technology & Math)

- Rocket Launch

International



Hands working together create a better program county wide!

WOOD RIVER BEAVERS

Our 4H club got awards at our October meeting. We also had a potluck at the Lahners home before going to Achievement Night.

The Wood River Beavers had a meeting on Sunday, November 18th. It was lead by Ricky because Shane and Arik were both hunting. We practiced some songs for the Music Festival.



Ricky Stahl, Rachel Tooze, Jared Anderson, Luke Lahners, Shane Tooze, Arik Hochstetler, Aidan Johnson, Gaby Stahl, Dominic St. John, Nolan Johnson, Grace Lahners, Renee Tooze.

-Submitted by Luke Lahners-Wood River Beavers



Camp News

CLUB SECRETARIES & REPORTERS...WE WANT TO HEAR FROM YOU!

We are looking forward to receiving your club minutes. Please email them or turn them in to the Extension Office after your club meetings. At times, we may pull things from your minutes for the Club Corner or your Reporter can write a short paragraph for publication. Your submissions keep us all up-to-date and may inspire others to try similar activities. Remember, all clubs should be filing your monthly minutes with the UW Extension Office.



College of Agricultural and Life Sciences • University of Wisconsin-Madison

Department of Animal Sciences • 1675 Observatory Drive • Madison, Wisconsin 53706-1284 • TEL 608-263-4300 • FAX 608-262-5157

The Meat Animal Quality Assurance (MAQA) Train-the-Advisor Trainings will be offered via an online method: Webinar. Individuals interested in receiving certification should contact one of the host counties to register and receive location information.

The MAQA Train-the-Advisor Trainings on **Feb 7 from 7 - 9 p.m.** Are located in:

Columbia	Lincoln	Rusk	Crawford	Douglas
Walworth	Jefferson	Polk	Waushara	Ozaukee
Green	Dodge	Rock	Price	Langlade

This year's topic is Care and Management.

These train-the-advisor sessions are for anyone interested in teaching or facilitating the Meat Animal Quality Assurance program to help youth livestock exhibitors in beef, sheep and swine learn how to produce a safe and wholesome product. It is encouraged that counties form a team of educators to conduct this program in their county. **These trainings are not certification sessions for youth!** Youth can attend if they would like to help teach the program.

These train-the-advisor sessions are for UW Extension Faculty, Agri-Science and Vo-Tech Instructors, Veterinarians, Project Leaders, parents or any interested volunteer.

These trainings are **required** for Extension personnel, Veterinarians and Agriculture Education Instructors in order to teach youth and have access to the database.

Volunteers are encouraged to attend a training conducted by the Youth Extension Livestock Specialist at least once every 3 years; otherwise **trained** extension agents, and Agriculture Education Instructors can update them the other years through a county training. Agents, Agriculture Education Instructors and veterinarians also have to attend a training at least once every 3 years conducted by the Youth Livestock Specialist. It is highly encouraged to attend trainings frequently as the activities and material change each year. To register for these events call the phone number at the site you would like to attend. If you have further questions about this program, contact Bernie O'Rourke, Extension Youth Livestock Specialist at 608-263-4304 or borourke2@ansci.wisc.edu Also check out the animal science website. <http://fyi.uwex.edu/maqa/>

University of Wisconsin – River Falls – contact timothy.j.buttles@uwrf.edu

Location and directions can be located at: <http://www.uwex.edu/ces/cty/>

Music Festival

It's that time of the year to showcase your talents at the Burnett County Music Festival! **The 2013 Music Contest will be held January 26, at 6:30 p.m. at the Siren High School.** Registrations are due by Friday, January 18. No late entries will be accepted. To register, call the UW-Extension or email danielle.miller@ces.uwex.edu by **Friday, January 18.** Provide your name, club, grade, category and division, selection title and any technical requirements.



Rules and Guidelines

- Each 4-H member may perform in two events in the contest in addition to a large ensemble event. *All clubs are encouraged to bring a large ensemble, as it builds club cohesiveness.*
- Solos and small ensembles are limited to three minutes. Advanced piano performers are allotted five minutes. Points will be deducted if contestant goes over the time limit.
- Each entry will consist of one musical selection.
- Each instrumental and piano performer must provide the judge a copy of the music they are performing.
- Voice over tapes or CDs are allowed but strongly discouraged. Please try to use an accompanist or background music tape or CD. If the singer must use a voice over recording, the singer will need to use a microphone to have his/her voice heard over that of the recorded performer.
- Monetary awards will be given to 1-4th places
- In all divisions, appearance and stage presence will count as part of your score. Remember to dress so that you look your best!

CATEGORIES

Category I - Solo
 Category II - Small Ensembles
 Category III - Large Ensemble (Group of 6 or more)

DIVISIONS

- A. INSTRUMENTAL PERFORMANCE: Judged on tone, articulation, rhythm, accuracy, musical value of the piece, and style/musicality.
- B. PIANO PERFORMANCE: Judged on rhythm, accuracy, phrasing, degree of difficulty and style/musicality. For pianists who are 6th grade and older, there are three subdivisions; Beginner, Intermediate and Advanced. An Advanced performer should be playing at level six or above in piano literature. Ask your piano teacher if you are not certain of your level.
- C. VOCAL PERFORMANCE: Judged on tone, intonation, diction, expression, style, musicality and appropriateness.
- D. VOCAL PLUS PERFORMANCE: Judging includes movement, choreography, costumes, props, originality and creativity in addition to areas judged in vocal performance.

AGE CLASSES

Cloverbuds - Grades K-2
 Junior - Grades 3-5
 Intermediate - Grades 6-8
 Senior - Grades 9 and up

Award Premiums			
Category I - All Divisions, Category II and III - All Divisions			
1st	\$4	1st	\$10
2nd	\$3	2nd	\$8
3rd	\$2	3rd	\$6

Partner with a friend, go solo, and Start Working on your Entries today!!

Calling all Cloverbuds!



Ever wish that there was something in 4-H just for you? Well...now there is! Burnett County 4-H is pleased to bring you monthly Cloverbud meetings, just for our 4-H members in grades K-2! Each month will have different games, songs, projects, and show you how much fun you can have as a 4-H member. Enrolled Cloverbuds are welcome to bring any friends that may be interested in joining 4-H.

Cloverbuds will meet monthly at the Government Center, the third Monday of the month (the Monday after the Leaders' meetings), from 6-7 p.m.

This Month's Meeting... The 4, H's

Come learn what the 4-H pledge means and what the H's stand for, and what that means to you as a 4-H'er.

January 21, 2013

6-7 p.m.

Room 165

Government Center, Siren



NORTH CENTRAL WISCONSIN FIBER ARTS GUILD

If you are interested in fiber and fiber arts and would like to know how you can get more involved in the fiber arts, check out the North Central Wisconsin Fiber Arts Guild. The guild meets the first Thursday of each month from 3:30-5:30 PM. Guild members are spinners, weavers, knitters, crotchetier and more. From beginners to experienced. New members are always welcome. For more information contact Jane Hansen at (715) 767-5958 or northfarm@centurytel.net.

4-H



VOLUNTEERS



Make a World of Difference



RECYCLED RIBBONS AND PROJECT LITERATURE WELCOMED

Do you have any project literature, old ribbons or plaques just sitting around on a shelf or in a box? If you do and they are not being used nor do you plan to use them, please drop them off the next time you're at the UW-Extension Office. There is a cost to literature and awards and those costs keep going up, up, up.



4-H Meats Judging Contest Slated for February 16th

The state 4-H Meats Judging Contest is scheduled for February 16th at the University of Wisconsin – Madison, Meat Laboratory. Registration is from 12:30 to 1 p.m. with the contest starting at 1 p.m. The highest scoring senior team will participate in the National 4-H Meat Judging Contest in Manhattan, KS. The second place senior team may participate in the National Western 4-H/FFA Meat Judging contest in Fort Collins, Colorado.

All of the information pertaining to this contest is located on the Extension Youth Livestock Website <http://fyi.uwex.edu/youthlivestock/programs/4hmeatscontest/>

The deadline for registration is Friday, February 8, 2012. The registration form is on the website.

If you have any questions please contact, Bernie O'Rourke, Extension Youth Livestock Specialist at borourke2@ansci.wisc.edu or 608-263-4304.



Club Assessment Results:

Last year, we sent out club assessments for all members and parents to fill out about their clubs. Well...the results are in!

We received the surveys back and after all the information was input, we discovered that the kids really enjoyed the Boat Cruise and Play and they also enjoyed the 4-H camp. They did not like having to do the Record Books. Their suggestions were mostly about having more trips, more fun and more kids.

The adults agreed that it would be nice to have more kids, but they also mentioned that they need more parent input when it comes to the kids, the Record Books and the Meetings.

Thank you for completing the surveys, it helps us to know what the kids like and dislike, and it helps us with the adults to know where they might need more help, or might have great ideas to expand 4-H.